

BMPR1A Monoclonal Antibody

Description

Product type	Antibody
Code	BT-MCA2167
Host	Mouse
Isotype	Mouse IgG1
Size	100µL, 50µL
Immunogen	Purified recombinant fragment of human BMPR1A (AA: 179-378) expressed in E. Coli.
Mol wt	60kDa
Species reactivity	Human,Mouse
Clonality	Monoclonal
Recommended application	WB,IHC,ICC,FCM
Concentration	N/A
Full name	N/A
Synonyms	ALK3;SKR5;CD292;ACVRLK3;10q23del

This product is for research use only, not for use in human, therapeutic or diagnostic procedure.

Background

N/A

Recommended Dilution

WB: 1:500 - 1:2000

IHC-p: 1:200 - 1:1000

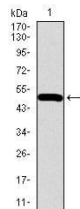
ICC: 1:200 - 1:1000

FCM: 1:200 - 1:400

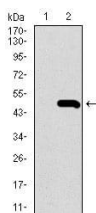
ELISA: 1:10000

Not yet tested in other applications.

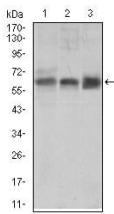
Images



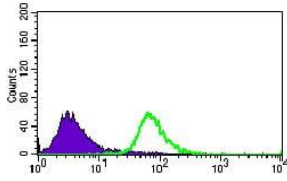
Western blot analysis using BMPR1A mAb against human BMPR1A recombinant protein. (Expected MW is 48.1 kDa)



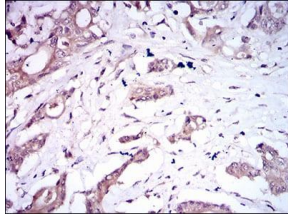
Western blot analysis using BMPR1A mAb against HEK293 (1) and BMPR1A (AA: 179-378)-hIgGFc transfected HEK293 (2) cell lysate.



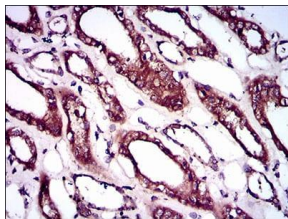
Western blot analysis using BMPR1A mouse mAb against PC-3 (1), K562 (2) cell lysate, and Mouse liver (3) tissue lysate.



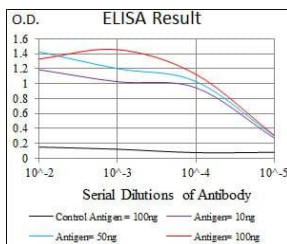
Flow cytometric analysis of HeLa cells using BMPR1A mouse mAb (green) and negative control (purple).



Immunohistochemical analysis of paraffin-embedded colon cancer tissues using BMPR1A mouse mAb with DAB staining.



Immunohistochemical analysis of paraffin-embedded kidney tissues using BMPR1A mouse mAb with DAB staining.



Black line: Control Antigen (100 ng); Purple line: Antigen(10ng); Blue line: Antigen (50 ng); Red line: Antigen (100 ng);

Storage

Store at 4°C short term. Aliquot and store at -20°C long term.

501 Changsheng S Rd, Nanhu Dist, Jiaxing, Zhejiang, China

Tel: 86 21 31007137 | E-mail: save@bt-laboratory.com | www.bt-laboratory.com