

VEGFA Monoclonal Antibody

Description

Product type	Antibody
Code	BT-MCA2168
Host	Mouse
Isotype	Mouse IgG1
Size	100µL, 50µL
Immunogen	Purified recombinant fragment of human VEGFA (AA: 207-371) expressed in E. Coli.
Mol wt	27kDa
Species reactivity	Human
Clonality	Monoclonal
Recommended application	WB, ICC
Concentration	N/A
Full name	N/A
Synonyms	VPF; VEGF; MVCD1

This product is for research use only, not for use in human, therapeutic or diagnostic procedure.

Background

N/A

Recommended Dilution

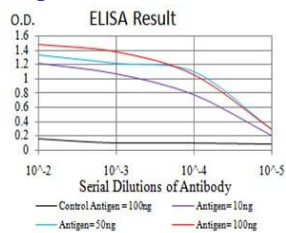
WB: 1:500 - 1:2000

ICC: 1:200 - 1:1000

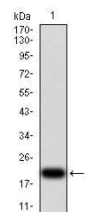
ELISA: 1:10000

Not yet tested in other applications.

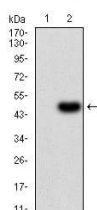
Images



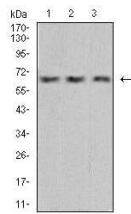
Black line: Control Antigen (100 ng); Purple line: Antigen (10ng); Blue line: Antigen (50 ng); Red line: Antigen (100 ng)



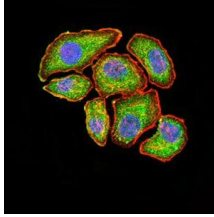
Western blot analysis using VEGFA mAb against human VEGFA (AA: 207-371) recombinant protein. (Expected MW is 20.6 kDa)



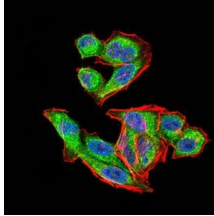
Western blot analysis using VEGFA mAb against HEK293 (1) and VEGFA (AA: 207-371)-hIgGFc transfected HEK293 (2) cell lysate.



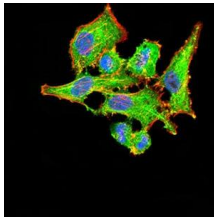
Western blot analysis using VEGFA mouse mAb against HeLa (1), HUVEC (2), and HEK293 (3) cell lysate.



Immunofluorescence analysis of GC-7901 cells using VEGFA mouse mAb (green). Blue: DRAQ5 fluorescent DNA dye. Red: Actin filaments have been labeled with Alexa Fluor- 555 phalloidin. Secondary antibody from Fisher (Cat#: 35503)



Immunofluorescence analysis of HeLa cells using VEGFA mouse mAb (green). Blue: DRAQ5 fluorescent DNA dye. Red: Actin filaments have been labeled with Alexa Fluor- 555 phalloidin. Secondary antibody from Fisher (Cat#: 35503)



Immunofluorescence analysis of HepG2 cells using VEGFA mouse mAb (green). Blue: DRAQ5 fluorescent DNA dye. Red: Actin filaments have been labeled with Alexa Fluor- 555 phalloidin. Secondary antibody from Fisher (Cat#: 35503)

Storage

Store at 4°C short term. Aliquot and store at -20°C long term.

501 Changsheng S Rd, Nanhu Dist, Jiaxing, Zhejiang, China

Tel: 86 21 31007137 | E-mail: save@bt-laboratory.com | www.bt-laboratory.com