

ROP1 Monoclonal Antibody

Description

Product type	Antibody
Code	BT-MCA2170
Host	Mouse
Isotype	Mouse IgG2a
Size	100µL, 50µL
Immunogen	Purified recombinant fragment of <i>Toxoplasma gondii</i> rhoptry protein ROP1 (AA: 42-183) expressed in <i>E. Coli</i> .
Mol wt	42.6kDa
Species reactivity	Human
Clonality	Monoclonal
Recommended application	IHC, ICC
Concentration	N/A
Full name	N/A
Synonyms	N

This product is for research use only, not for use in human, therapeutic or diagnostic procedure.

Background

N/A

Recommended Dilution

WB: 1:500 - 1:2000

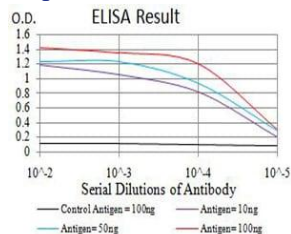
IHC-p: 1:200 - 1:1000

ICC: 1:200 - 1:1000

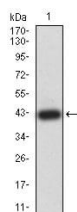
ELISA: 1:10000

Not yet tested in other applications.

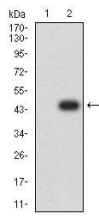
Images



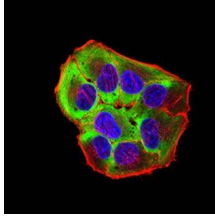
Black line: Control Antigen (100 ng); Purple line: Antigen (10ng); Blue line: Antigen (50 ng); Red line: Antigen (100 ng)



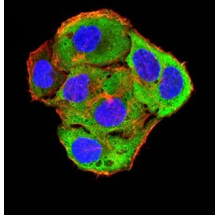
Western blot analysis using ROP1 mAb against *Toxoplasma gondii* rhoptry protein ROP1 (AA: 42-183) recombinant protein. (Expected MW is 41.1 kDa)



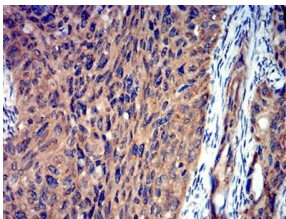
Western blot analysis using ROP1 mAb against HEK293 (1) and ROP1 (AA: 42-183)-hlgGFc transfected HEK293 (2) cell lysate.



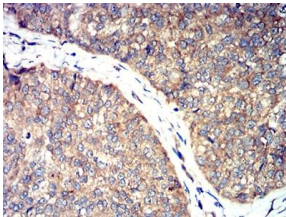
Immunofluorescence analysis of HeLa cells using ROP1 mouse mAb (green). Blue: DRAQ5 fluorescent DNA dye. Red: Actin filaments have been labeled with Alexa Fluor- 555 phalloidin. Secondary antibody from Fisher (Cat#: 35503)



Immunofluorescence analysis of SMMC-7721 cells using ROP1 mouse mAb (green). Blue: DRAQ5 fluorescent DNA dye. Red: Actin filaments have been labeled with Alexa Fluor- 555 phalloidin. Secondary antibody from Fisher (Cat#: 35503)



Immunohistochemical analysis of paraffin-embedded ROP1 tissues using cervical cancer mouse mAb with DAB staining.



Immunohistochemical analysis of paraffin-embedded ROP1 tissues using bladder cancer mouse mAb with DAB staining.

Storage

Store at 4°C short term. Aliquot and store at -20°C long term.

501 Changsheng S Rd, Nanhu Dist, Jiaxing, Zhejiang, China

Tel: 86 21 31007137 | E-mail: save@bt-laboratory.com | www.bt-laboratory.com