

AFP Monoclonal Antibody

Description

Product type	Antibody
Code	BT-MCA2176
Host	Mouse
Isotype	Mouse IgG2b
Size	100 μ L, 50 μ L
Immunogen	Purified recombinant fragment of human AFP expressed in E. Coli.
Mol wt	69kDa
Species reactivity	Human
Clonality	Monoclonal
Recommended application	WB
Concentration	N/A
Full name	N/A
Synonyms	alpha-fetoprotein;FETA;HPAFP

This product is for research use only, not for use in human, therapeutic or diagnostic procedure.

Background

AFP (alpha-fetoprotein), a major plasma protein produced by the yolk sac and the liver during fetal life. Alpha-fetoprotein expression in adults is often associated with hepatoma or teratoma. However, hereditary persistence of alpha-fetoprotein may also be found in individuals with no obvious pathology. The protein is thought to be the fetal counterpart of serum albumin, and the alpha-fetoprotein and albumin genes are present in tandem in the same transcriptional orientation on chromosome 4. Alpha-fetoprotein is found in monomeric as well as dimeric and trimeric forms, and binds copper, nickel, fatty acids and bilirubin. The level of alpha-fetoprotein in amniotic fluid is used to measure renal loss of protein to screen for spina bifida and anencephaly.

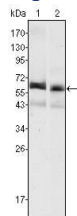
Recommended Dilution

WB: 1:500 - 1:2000

ELISA: 1:10000

Not yet tested in other applications.

Images



Western blot analysis using AFP mouse mAb against HepG2 (1) and SMMC-7721 (2) cell lysate.

Storage

Store at 4°C short term. Aliquot and store at -20°C long term.