

CD306 Monoclonal Antibody

Description

Product type	Antibody
Code	BT-MCA2196
Host	Mouse
Isotype	Mouse IgG1
Size	100µL, 50µL
Immunogen	Purified recombinant fragment of human CD306 (AA: 22-152) expressed in E. Coli.
Mol wt	16.3kDa
Species reactivity	Human
Clonality	Monoclonal
Recommended application	Others
Concentration	N/A
Full name	N/A
Synonyms	LAIR2

This product is for research use only, not for use in human, therapeutic or diagnostic procedure.

Background

The protein encoded by this gene is a member of the immunoglobulin superfamily. It was identified by its similarity to leukocyte-associated immunoglobulin-like receptor 1, a membrane-bound receptor that modulates innate immune response. The protein encoded by this locus is a soluble receptor that may play roles in both inhibition of collagen-induced platelet aggregation and vessel formation during placental implantation. This gene maps to a region of 19q13.4, termed the leukocyte receptor cluster, which contains 29 genes in the immunoglobulin superfamily. Alternatively spliced transcript variants have been described for this gene. [provided by RefSeq, Sep 2013]

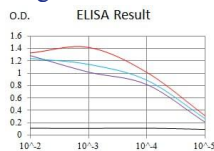
Recommended Dilution

WB: 1:500 - 1:2000

ELISA: 1:10000

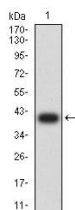
Not yet tested in other applications.

Images

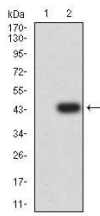


Black line: Control Antigen (100 ng); Purple line: Antigen (10ng); Blue line: Antigen (50 ng); Red line: Antigen (100 ng)

Serial Dilutions of Antibody
 Control Antigen = 100ng Antigen = 10ng
 Antigen = 50ng Antigen = 100ng



Western blot analysis using CD306 mAb against human CD306 (AA: 22-152) recombinant protein. (Expected MW is 40 kDa)



Western blot analysis using CD306 mAb against HEK293 (1) and CD306 (AA: 22-152)-hIgGFc transfected HEK293 (2) cell lysate.

Storage

Store at 4°C short term. Aliquot and store at -20°C long term.

501 Changsheng S Rd, Nanhu Dist, Jiaxing, Zhejiang, China

Tel: 86 21 31007137 | E-mail: save@bt-laboratory.com | www.bt-laboratory.com