

CD79A Monoclonal Antibody

Description

Product type	Antibody
Code	BT-MCA2198
Host	Mouse
Isotype	Mouse IgG2b
Size	100µL, 50µL
Immunogen	Purified recombinant fragment of human CD79A (AA: extra(33-143)) expressed in E. Coli.
Mol wt	25kDa
Species reactivity	Others
Clonality	Monoclonal
Recommended application	ICC,FCM
Concentration	N/A
Full name	N/A
Synonyms	IGA;MB-1

This product is for research use only, not for use in human, therapeutic or diagnostic procedure.

Background

The B lymphocyte antigen receptor is a multimeric complex that includes the antigen-specific component, surface immunoglobulin (Ig). Surface Ig non-covalently associates with two other proteins, Ig-alpha and Ig-beta, which are necessary for expression and function of the B-cell antigen receptor. This gene encodes the Ig-alpha protein of the B-cell antigen component. Alternatively spliced transcript variants encoding different isoforms have been described. [provided by RefSeq, Jul 2008]

Recommended Dilution

WB: 1:500 - 1:2000

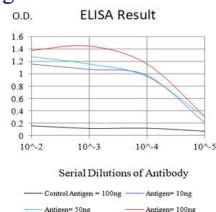
ICC: 1:200 - 1:1000

FCM: 1:200 - 1:400

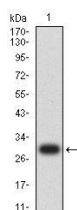
ELISA: 1:10000

Not yet tested in other applications.

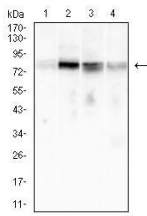
Images



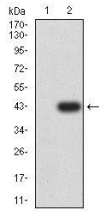
Black line: Control Antigen (100 ng);Purple line: Antigen (10ng); Blue line: Antigen (50 ng); Red line:Antigen (100 ng)



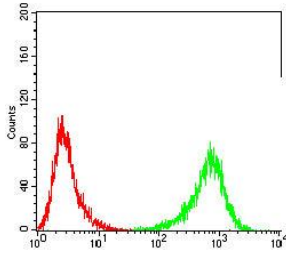
Western blot analysis using CD79A mAb against human CD79A (AA: extra(33-143)) recombinant protein. (Expected MW is 28.3kDa)



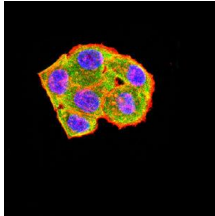
Western blot analysis using CD79A mouse mAb against Raji (1), Ramos (2), k562 (3), and MOLT4 (4) cell lysate.



Western blot analysis using CD79A mAb against HEK293-6e (1) and CD79A (AA:extra(33-143))-hIgGFc transfected HEK293-6e (2) cell lysate.



Flow cytometric analysis of Raji cells using CD79A mouse mAb (green) and negative control (red).



Immunofluorescence analysis of HeLa cells using CD79A mouse mAb (green). Blue: DRAQ5 fluorescent DNA dye. Red: Actin filaments have been labeled with Alexa Fluor- 555 phalloidin. Secondary antibody from Fisher (Cat#: 35503)

Storage

Store at 4°C short term. Aliquot and store at -20°C long term.

501 Changsheng S Rd, Nanhu Dist, Jiaxing, Zhejiang, China

Tel: 86 21 31007137 | E-mail: save@bt-laboratory.com | www.bt-laboratory.com