

# Epha10 Monoclonal Antibody

## Description

<b>Product type</b>	Antibody
<b>Code</b>	BT-MCA2199
<b>Host</b>	Mouse
<b>Isotype</b>	Mouse IgG2a
<b>Size</b>	100μL, 50μL
<b>Immunogen</b>	Purified recombinant fragment of human Epha10 expressed in E. Coli.
<b>Mol wt</b>	110kDa
<b>Species reactivity</b>	Human
<b>Clonality</b>	Monoclonal
<b>Recommended application</b>	Others
<b>Concentration</b>	N/A
<b>Full name</b>	N/A
<b>Synonyms</b>	FLJ16103;FLJ33655;MGC43817

This product is for research use only, not for use in human, therapeutic or diagnostic procedure.

## Background

Ephrin receptors, the largest subfamily of receptor tyrosine kinases (RTKs), and their ephrin ligands are important mediators of cell-cell communication regulating cell attachment, shape, and mobility in neuronal and epithelial cells (Aasheim et al., 2005 (PubMed 15777695)). Tissue specificity: Mainly expressed in testis.

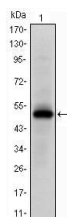
## Recommended Dilution

WB: 1:500 - 1:2000

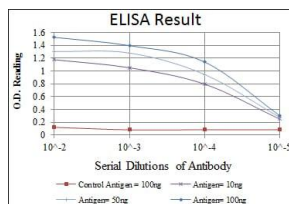
ELISA: 1:10000

Not yet tested in other applications.

## Images



Western blot analysis using Epha10 mAb against human Epha10 (AA: 34-295) recombinant protein. (Expected MW is 50 kDa)



Red: Control Antigen (100ng); Purple: Antigen (10ng); Green: Antigen (50ng); Blue: Antigen (100ng);

## Storage

Store at 4°C short term. Aliquot and store at -20°C long term.

