

GSTP1 Monoclonal Antibody

Description

Product type	Antibody
Code	BT-MCA2204
Host	Mouse
Isotype	Mouse IgG1
Size	100µL, 50µL
Immunogen	Purified recombinant fragment of human GSTP1 (AA: 2-210) expressed in E. Coli.
Mol wt	23kDa
Species reactivity	Others
Clonality	Monoclonal
Recommended application	WB,IHC,ICC,FCM
Concentration	N/A
Full name	N/A
Synonyms	PI;DFN7;GST3;GSTP;FAEES3;HEL-S-22

This product is for research use only, not for use in human, therapeutic or diagnostic procedure.

Background

Glutathione S-transferases (GSTs) are a family of enzymes that play an important role in detoxification by catalyzing the conjugation of many hydrophobic and electrophilic compounds with reduced glutathione. Based on their biochemical, immunologic, and structural properties, the soluble GSTs are categorized into 4 main classes: alpha, mu, pi, and theta. This GST family member is a polymorphic gene encoding active, functionally different GSTP1 variant proteins that are thought to function in xenobiotic metabolism and play a role in susceptibility to cancer, and other diseases.

Recommended Dilution

WB: 1:500 - 1:2000

IHC-p: 1:200-1:1000

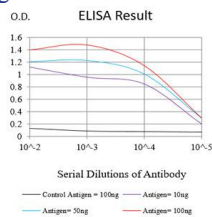
ICC: 1:200 - 1:1000

FCM: 1:200-1:400

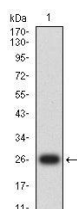
ELISA: 1:10000

Not yet tested in other applications.

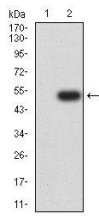
Images



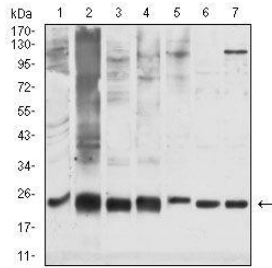
Black line: Control Antigen (100 ng);Purple line: Antigen (10ng); Blue line: Antigen (50 ng); Red line: Antigen (100 ng)



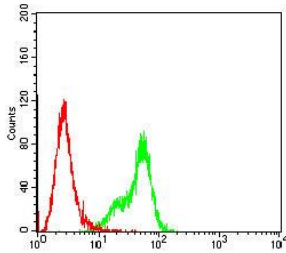
Western blot analysis using GSTP1 mAb against human GSTP1 (AA: 2-210) recombinant protein. (Expected MW is 26 kDa)



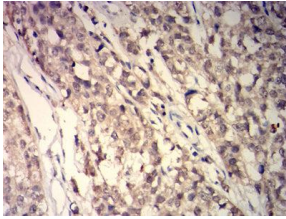
Western blot analysis using GSTP1 mAb against HEK293-6e (1) and GSTP1 (AA: 2-210)-hIgGFc transfected HEK293-6e (2) cell lysate.



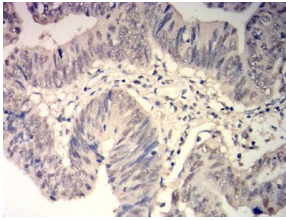
Western blot analysis using GSTP1 mouse mAb against PC-3 (1), K562 (2), HeLa (3) Jurkat (4), MOLT-4 (5), HCT116 (6), and A431 (7) cell lysate.



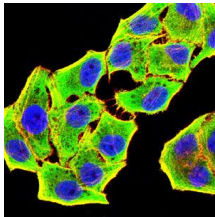
Flow cytometric analysis of HeLa cells using GSTP1 mouse mAb (green) and negative control (red).



Immunohistochemical analysis of paraffin-embedded cervical cancer tissues using GSTP1 mouse mAb with DAB staining.



Immunohistochemical analysis of paraffin-embedded rectal cancer tissues using GSTP1 mouse mAb with DAB staining.



Immunofluorescence analysis of HeLa cells using GSTP1 mouse mAb (green). Blue: DRAQ5 fluorescent DNA dye. Red: Actin filaments have been labeled with Alexa Fluor-555 phalloidin. Secondary antibody from Fisher (Cat#: 35503)

Storage

Store at 4°C short term. Aliquot and store at -20°C long term.

501 Changsheng S Rd, Nanhu Dist, Jiaxing, Zhejiang, China

Tel: 86 21 31007137 | E-mail: save@bt-laboratory.com | www.bt-laboratory.com