

## IghA1 Monoclonal Antibody

### Description

<b>Product type</b>	Antibody
<b>Code</b>	BT-MCA2207
<b>Host</b>	Mouse
<b>Isotype</b>	Mouse IgG1
<b>Size</b>	100µL, 50µL
<b>Immunogen</b>	Purified recombinant fragment of human IghA1 (AA: 207-353) expressed in E. Coli.
<b>Mol wt</b>	37.6kDa
<b>Species reactivity</b>	Human,Mouse,Monkey
<b>Clonality</b>	Monoclonal
<b>Recommended application</b>	WB,IHC,FCM
<b>Concentration</b>	N/A
<b>Full name</b>	N/A
<b>Synonyms</b>	IgA1

This product is for research use only, not for use in human, therapeutic or diagnostic procedure.

### Background

N/A

### Recommended Dilution

WB: 1:500 - 1:2000

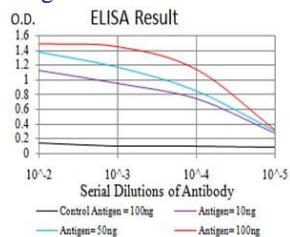
IHC-p: 1:200 - 1:1000

FCM: 1:200 - 1:400

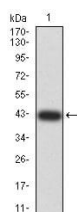
ELISA: 1:10000

Not yet tested in other applications.

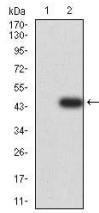
### Images



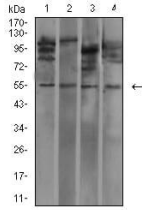
Black line: Control Antigen (100 ng);Purple line: Antigen (10ng); Blue line: Antigen (50 ng); Red line:Antigen (100 ng)



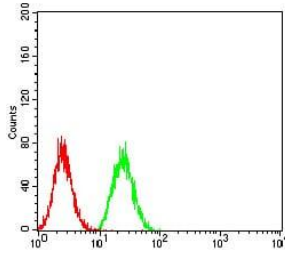
Western blot analysis using IghA1 mAb against human IghA1 (AA: 207-353) recombinant protein. (Expected MW is 41.7 kDa)



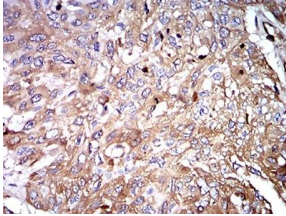
Western blot analysis using IghA1 mAb against HEK293 (1) and IghA1 (AA: 207-353)-hIgGFc transfected HEK293 (2) cell lysate.



Western blot analysis using IghA1 mouse mAb against MOLT4 (1), L1210 (2), HepG2 (3), and COS7 (4) cell lysate.



Flow cytometric analysis of HeLa cells using IghA1 mouse mAb (green) and negative control (red).



Immunohistochemical analysis of paraffin-embedded esophageal cancer tissues using IghA1 mouse mAb with DAB staining.

### Storage

Store at 4°C short term. Aliquot and store at -20°C long term.

501 Changsheng S Rd, Nanhu Dist, Jiaxing, Zhejiang, China

Tel: 86 21 31007137 | E-mail: [save@bt-laboratory.com](mailto:save@bt-laboratory.com) | [www.bt-laboratory.com](http://www.bt-laboratory.com)