

PDE1B Monoclonal Antibody

Description

Product type	Antibody
Code	BT-MCA2214
Host	Mouse
Isotype	Mouse IgG1
Size	100µL, 50µL
Immunogen	Purified recombinant fragment of human PDE1B (AA: 370-536) expressed in E. Coli.
Mol wt	61.4kDa
Species reactivity	Human,Rat
Clonality	Monoclonal
Recommended application	IHC,FCM
Concentration	N/A
Full name	N/A
Synonyms	PDE1B1;PDES1B

This product is for research use only, not for use in human, therapeutic or diagnostic procedure.

Background

N/A

Recommended Dilution

WB: 1:500 - 1:2000

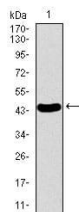
IHC-p: 1:200 - 1:1000

FCM: 1:200 - 1:400

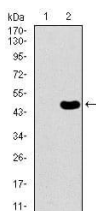
ELISA: 1:10000

Not yet tested in other applications.

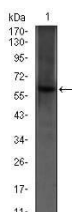
Images



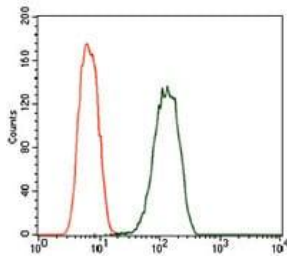
Western blot analysis using PDE1B mAb against human PDE1B recombinant protein. (Expected MW is 44.4 kDa)



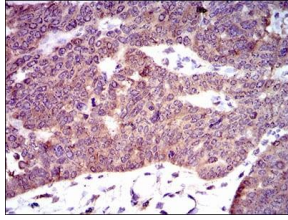
Western blot analysis using PDE1B mAb against HEK293 (1) and PDE1B (AA: 370-536)-hIgGfc transfected HEK293 (2) cell lysate.



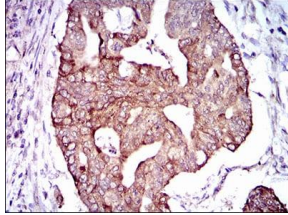
Western blot analysis using PDE1B mouse mAb against PC-12 (1) cell lysate.



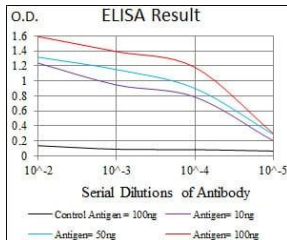
Flow cytometric analysis of A549 cells using PDE1B mouse mAb (green) and negative control (red).



Immunohistochemical analysis of paraffin-embedded ovarian cancer tissues using PDE1B mouse mAb with DAB staining.



Immunohistochemical analysis of paraffin-embedded rectum cancer tissues using PDE1B mouse mAb with DAB staining.



Black line: Control Antigen (100 ng); Purple line: Antigen(10ng); Blue line: Antigen (50 ng); Red line: Antigen (100 ng);

Storage

Store at 4°C short term. Aliquot and store at -20°C long term.

501 Changsheng S Rd, Nanhu Dist, Jiaxing, Zhejiang, China

Tel: 86 21 31007137 | E-mail: save@bt-laboratory.com | www.bt-laboratory.com