

NT5E Monoclonal Antibody

Description

Product type	Antibody
Code	BT-MCA2230
Host	Mouse
Isotype	Mouse IgG1
Size	100µL, 50µL
Immunogen	Purified recombinant fragment of human NT5E (AA: 30-250) expressed in E. Coli.
Mol wt	63.4kDa
Species reactivity	Human
Clonality	Monoclonal
Recommended application	WB,IHC,FCM
Concentration	N/A
Full name	N/A
Synonyms	NT;eN;NT5;NTE;eNT;CD73;E5NT;CALJA

This product is for research use only, not for use in human, therapeutic or diagnostic procedure.

Background

N/A

Recommended Dilution

WB: 1:500 - 1:2000

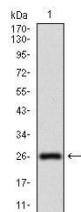
IHC-p: 1:200 - 1:1000

FCM: 1:200 - 1:400

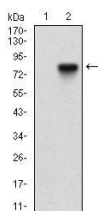
ELISA: 1:10000

Not yet tested in other applications.

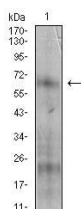
Images



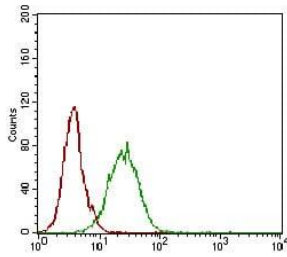
Western blot analysis using NT5E mAb against human NT5E (AA: 30-250) recombinant protein.
(Expected MW is 26.6 kDa)



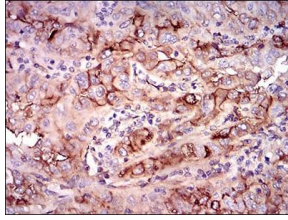
Western blot analysis using NT5E mAb against HEK293 (1) and NT5E (AA: 30-250)-hIgGFc transfected HEK293 (2) cell lysate.



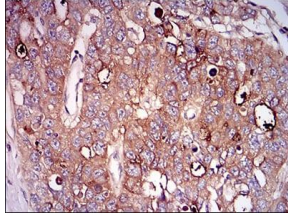
Western blot analysis using NT5E mouse mAb against A431 cell lysate.



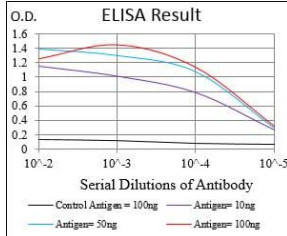
Flow cytometric analysis of A431 cells using NT5E mouse mAb (green) and negative control (red).



Immunohistochemical analysis of paraffin-embedded endometrial cancer tissues using NT5E mouse mAb with DAB staining.



Immunohistochemical analysis of paraffin-embedded esophageal cancer tissues using NT5E mouse mAb with DAB staining.



Black line: Control Antigen (100 ng); Purple line: Antigen(10ng); Blue line: Antigen (50 ng); Red line: Antigen (100 ng);

Storage

Store at 4°C short term. Aliquot and store at -20°C long term.

501 Changsheng S Rd, Nanhu Dist, Jiaxing, Zhejiang, China

Tel: 86 21 31007137 | E-mail: save@bt-laboratory.com | www.bt-laboratory.com