

ALDOA Monoclonal Antibody

Description

Product type	Antibody
Code	BT-MCA2236
Host	Mouse
Isotype	Mouse IgG1
Size	100µL, 50µL
Immunogen	Purified recombinant fragment of human ALDOA (AA: 9-145) expressed in E. Coli.
Mol wt	39.4kDa
Species reactivity	Human
Clonality	Monoclonal
Recommended application	ICC,FCM
Concentration	N/A
Full name	N/A
Synonyms	ALDA;GSD12;HEL-S-87p

This product is for research use only, not for use in human, therapeutic or diagnostic procedure.

Background

N/A

Recommended Dilution

WB: 1:500 - 1:2000

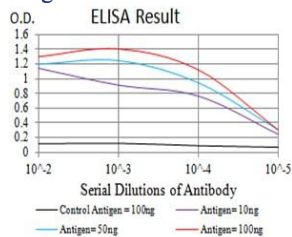
ICC: 1:100 - 1:500

FCM: 1:200 - 1:400

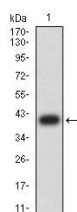
ELISA: 1:10000

Not yet tested in other applications.

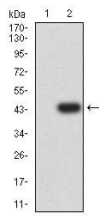
Images



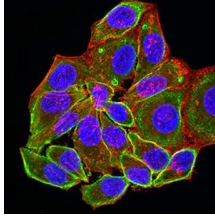
Black line: Control Antigen (100 ng);Purple line: Antigen (10ng); Blue line: Antigen (50 ng); Red line:Antigen (100 ng)



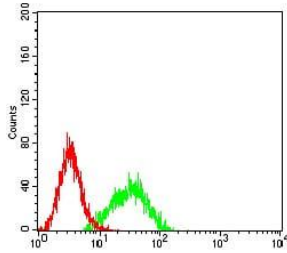
Western blot analysis using ALDOA mAb against human ALDOA (AA: 9-145) recombinant protein. (Expected MW is 40.7 kDa)



Western blot analysis using ALDOA mAb against HEK293 (1) and ALDOA (AA: 9-145)-hlgGFc transfected HEK293 (2) cell lysate.



Immunofluorescence analysis of HeLa cells using ALDOA mouse mAb (green). Blue: DRAQ5 fluorescent DNA dye. Red: Actin filaments have been labeled with Alexa Fluor-555 phalloidin. Secondary antibody from Fisher (Cat#: 35503)



Flow cytometric analysis of K562 cells using ALDOA mouse mAb (green) and negative control (red).

Storage

Store at 4°C short term. Aliquot and store at -20°C long term.

501 Changsheng S Rd, Nanhu Dist, Jiaxing, Zhejiang, China

Tel: 86 21 31007137 | E-mail: save@bt-laboratory.com | www.bt-laboratory.com