

RALA Monoclonal Antibody

Description

Product type	Antibody
Code	BT-MCA2242
Host	Mouse
Isotype	Mouse IgG1
Size	100µL, 50µL
Immunogen	Purified recombinant fragment of human RALA (AA: 71-203) expressed in E. Coli.
Mol wt	23.6kDa
Species reactivity	Human,Mouse,Monkey
Clonality	Monoclonal
Recommended application	WB,FCM
Concentration	N/A
Full name	N/A
Synonyms	RAL

This product is for research use only, not for use in human, therapeutic or diagnostic procedure.

Background

N/A

Recommended Dilution

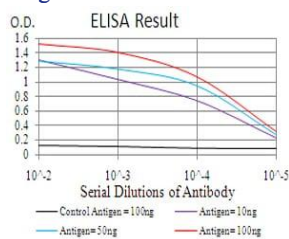
WB: 1:500 - 1:2000

FCM: 1:200 - 1:400

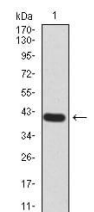
ELISA: 1:10000

Not yet tested in other applications.

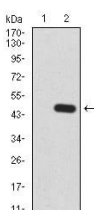
Images



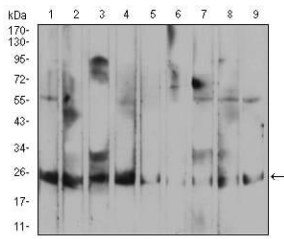
Black line: Control Antigen (100 ng); Purple line: Antigen(10ng); Blue line: Antigen (50 ng); Red line: Antigen (100 ng);



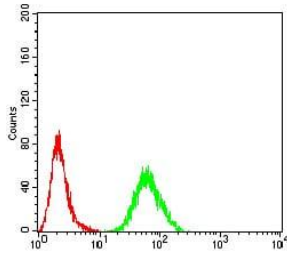
Western blot analysis using RALA mAb against human RALA (AA: 71-203) recombinant protein. (Expected MW is 41.5 kDa)



Western blot analysis using RALA mAb against HEK293 (1) and RALA (AA: 71-203)-hIgGFc transfected HEK293 (2) cell lysate.



Western blot analysis using RALA mouse mAb against HepG2 (1), MCF-7 (2), A549 (3), K562 (4), Raji (5), MOLT4 (6), HeLa (7), COS7 (8), and NIH3T3 (9) cell lysate.



Flow cytometric analysis of MCF-7 cells using RALA mouse mAb (green) and negative control (red).

Storage

Store at 4°C short term. Aliquot and store at -20°C long term.

501 Changsheng S Rd, Nanhu Dist, Jiaxing, Zhejiang, China

Tel: 86 21 31007137 | E-mail: save@bt-laboratory.com | www.bt-laboratory.com