

MR1 Monoclonal Antibody

Description

Product type	Antibody
Code	BT-MCA2257
Host	Mouse
Isotype	Mouse IgG2a
Size	100µL, 50µL
Immunogen	Purified recombinant fragment of human MR1 (AA: extra(23-302)) expressed in E. Coli.
Mol wt	39.4kda
Species reactivity	Others
Clonality	Monoclonal
Recommended application	IHC,FCM
Concentration	N/A
Full name	N/A
Synonyms	HLALS

This product is for research use only, not for use in human, therapeutic or diagnostic procedure.

Background

MAIT (mucosal-associated invariant T-cells) lymphocytes represent a small population of T-cells primarily found in the gut. The protein encoded by this gene is an antigen-presenting molecule that presents metabolites of microbial vitamin B to MAITs. This presentation may activate the MAITs to regulate the amounts of specific types of bacteria in the gut. Several transcript variants encoding different isoforms have been found for this gene, and a pseudogene of it has been detected about 36 kbp upstream on the same chromosome.

Recommended Dilution

WB: 1:500 - 1:2000

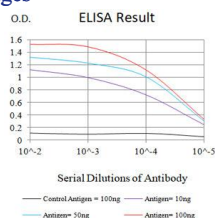
IHC-p: 1:200 - 1:1000

FCM: 1:200 - 1:400

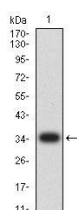
ELISA: 1:10000

Not yet tested in other applications.

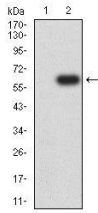
Images



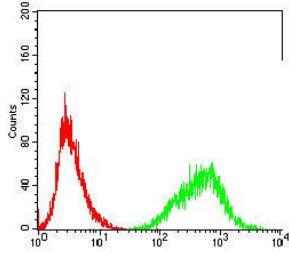
Black line: Control Antigen (100 ng);Purple line: Antigen (10ng); Blue line: Antigen (50 ng); Red line:Antigen (100 ng)



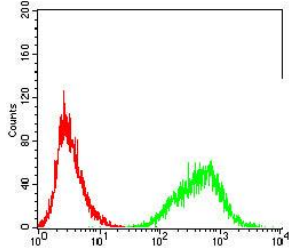
Western blot analysis using MR1 mAb against human MR1 (AA: extra(23-302)) recombinant protein. (Expected MW is 35.6kDa)



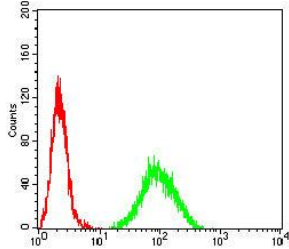
Western blot analysis using MR1 mAb against HEK293-6e (1) and MR1 (AA: extra(23-302))-hlgGFc transfected HEK293-6e (2) cell lysate.



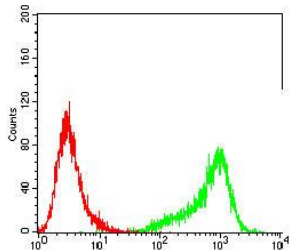
Flow cytometric analysis of Jurkat cells using MR1 mouse mAb (green) and negative control (red).



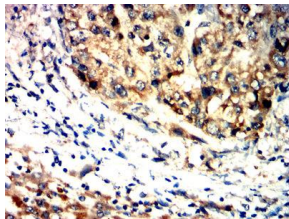
Flow cytometric analysis of K562 cells using MR1 mouse mAb (green) and negative control (red).



Flow cytometric analysis of THP-1 cells using MR1 mouse mAb (green) and negative control (red).



Flow cytometric analysis of U937 cells using MR1 mouse mAb (green) and negative control (red).



Immunohistochemical analysis of paraffin-embedded liver cancer tissues using MR1 mouse mAb with DAB staining.

Storage

Store at 4°C short term. Aliquot and store at -20°C long term.

501 Changsheng S Rd, Nanhu Dist, Jiaxing, Zhejiang, China

Tel: 86 21 31007137 | E-mail: save@bt-laboratory.com | www.bt-laboratory.com