

CK5 Monoclonal Antibody

Description

Product type	Antibody
Code	BT-MCA2269
Host	Mouse
Isotype	Mouse IgG1
Size	100µL, 50µL
Immunogen	Purified recombinant fragment of human CK5 (AA: 258-357) expressed in E. Coli.
Mol wt	62.4kDa
Species reactivity	Human
Clonality	Monoclonal
Recommended application	WB,IHC,ICC,FCM
Concentration	N/A
Full name	N/A
Synonyms	KRT5;K5;DDD;DDD1;EBS2;KRT5A

This product is for research use only, not for use in human, therapeutic or diagnostic procedure.

Background

N/A

Recommended Dilution

WB: 1:500 - 1:2000

IHC-p: 1:200 - 1:1000

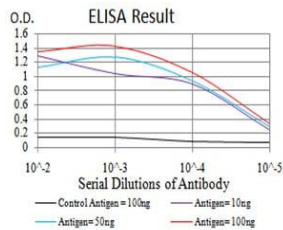
ICC: 1:200 - 1:1000

FCM: 1:200 - 1:400

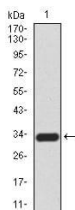
ELISA: 1:10000

Not yet tested in other applications.

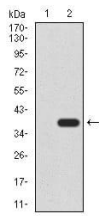
Images



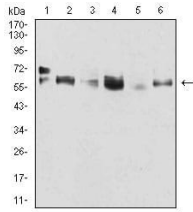
Black line: Control Antigen (100 ng); Purple line: Antigen(10ng); Blue line: Antigen (50 ng); Red line: Antigen (100 ng);



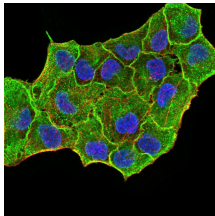
Western blot analysis using CK5 mAb against human CK5 (AA: 258-357) recombinant protein.
(Expected MW is 33.1 kDa)



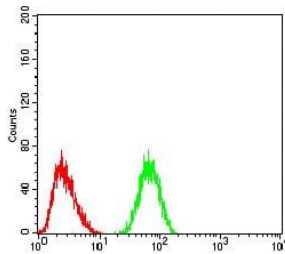
Western blot analysis using CK5 mAb against HEK293 (1) and CK5 (AA: 258-357)-hIgGFc transfected HEK293 (2) cell lysate.



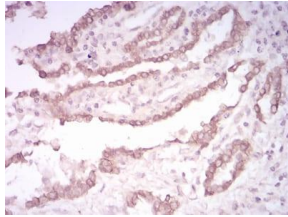
Western blot analysis using CK5 mouse mAb against A431 (1), MCF-7 (2), SK-Br-3 (3), HeLa (4), Lncap (5), and HepG2 (6) cell lysate.



Immunofluorescence analysis of MCF-7 cells using CK5 mouse mAb (green). Blue: DRAQ5 fluorescent DNA dye. Red: Actin filaments have been labeled with Alexa Fluor- 555 phalloidin. Secondary antibody from Fisher (Cat#: 35503)



Flow cytometric analysis of HeLa cells using CK5 mouse mAb (green) and negative control (red).



Immunohistochemical analysis of paraffin-embedded lung cancer tissues using CK5 mouse mAb with DAB staining.

Storage

Store at 4°C short term. Aliquot and store at -20°C long term.

501 Changsheng S Rd, Nanhu Dist, Jiaxing, Zhejiang, China

Tel: 86 21 31007137 | E-mail: save@bt-laboratory.com | www.bt-laboratory.com