

## XRCC6 Monoclonal Antibody

### Description

<b>Product type</b>	Antibody
<b>Code</b>	BT-MCA2290
<b>Host</b>	Mouse
<b>Isotype</b>	Mouse IgG1
<b>Size</b>	100µL, 50µL
<b>Immunogen</b>	Purified recombinant fragment of human XRCC6 (AA: 6-214) expressed in E. Coli.
<b>Mol wt</b>	69.8kDa
<b>Species reactivity</b>	Human
<b>Clonality</b>	Monoclonal
<b>Recommended application</b>	WB,IHC,ICC,FCM
<b>Concentration</b>	N/A
<b>Full name</b>	N/A
<b>Synonyms</b>	ML8;KU70;TLAA;CTC75;CTCBF;G22P1

This product is for research use only, not for use in human, therapeutic or diagnostic procedure.

### Background

The p70/p80 autoantigen is a nuclear complex consisting of two subunits with molecular masses of approximately 70 and 80 kDa. The complex functions as a single-stranded DNA-dependent ATP-dependent helicase. The complex may be involved in the repair of nonhomologous DNA ends such as that required for double-strand break repair, transposition, and V(D)J recombination. High levels of autoantibodies to p70 and p80 have been found in some patients with systemic lupus erythematosus.

### Recommended Dilution

WB: 1:500 - 1:2000

IHC-p: 1:200 - 1:1000

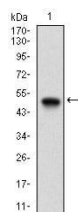
ICC: 1:200 - 1:1000

FCM: 1:200 - 1:400

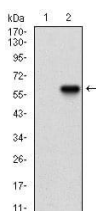
ELISA: 1:10000

Not yet tested in other applications.

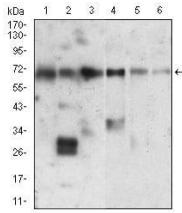
### Images



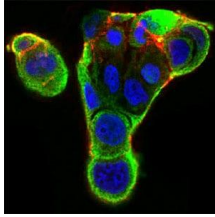
Western blot analysis using XRCC6 mAb against human XRCC6 (AA: 6-214) recombinant protein.  
(Expected MW is 49.7 kDa)



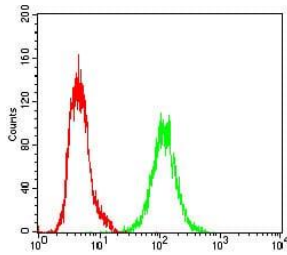
Western blot analysis using XRCC6 mAb against HEK293 (1) and XRCC6 (AA: 6-214)-hIgGFc transfected HEK293 (2) cell lysate.



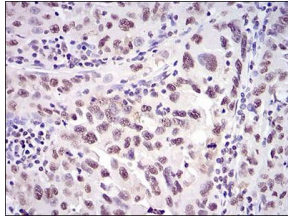
Western blot analysis using XRCC6 mouse mAb against HeLa (1), PC-2 (2), A549 (3), A431 (4), HepG2 (5), K562 (6) cell lysate.



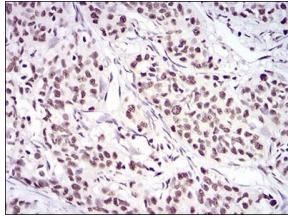
Immunofluorescence analysis of MCF-7 cells using XRCC6 mouse mAb (green). Blue: DRAQ5 fluorescent DNA dye. Red: Actin filaments have been labeled with Alexa Fluor-555 phalloidin. Secondary antibody from Fisher (Cat#: 35503)



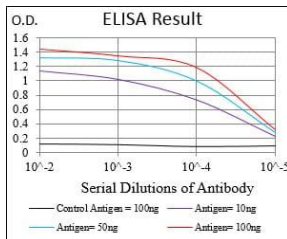
Flow cytometric analysis of A431 cells using XRCC6 mouse mAb (green) and negative control (red).



Immunohistochemical analysis of paraffin-embedded endometrial cancer tissues using XRCC6 mouse mAb with DAB staining.



Immunohistochemical analysis of paraffin-embedded cervical cancer tissues using XRCC6 mouse mAb with DAB staining.



Black line: Control Antigen (100 ng); Purple line: Antigen(10ng); Blue line: Antigen (50 ng); Red line: Antigen (100 ng);

## Storage

Store at 4°C short term. Aliquot and store at -20°C long term.

501 Changsheng S Rd, Nanhu Dist, Jiaxing, Zhejiang, China

Tel: 86 21 31007137 | E-mail: save@bt-laboratory.com | www.bt-laboratory.com