

SLC27A5 Monoclonal Antibody

Description

Product type	Antibody
Code	BT-MCA2295
Host	Mouse
Isotype	Mouse IgG1
Size	100µL, 50µL
Immunogen	Purified recombinant fragment of human SLC27A5 (AA: 508-570) expressed in E. Coli.
Mol wt	75.4kDa
Species reactivity	Human,Mouse,Monkey
Clonality	Monoclonal
Recommended application	WB,IHC,FCM
Concentration	N/A
Full name	N/A
Synonyms	BAL;ACSB;BACS;FATP5;ACSVL6;FACVL3;FATP-5;VLACSR;VLCSSH2;VLCS-H2

This product is for research use only, not for use in human, therapeutic or diagnostic procedure.

Background

N/A

Recommended Dilution

WB: 1:500 - 1:2000

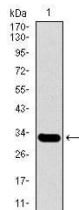
IHC-p: 1:200 - 1:1000

FCM: 1:200 - 1:400

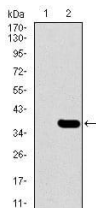
ELISA: 1:10000

Not yet tested in other applications.

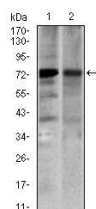
Images



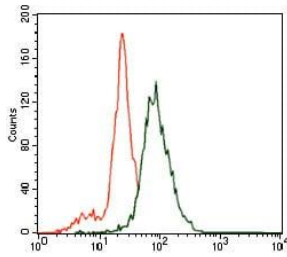
Western blot analysis using SLC27A5 mAb against human SLC27A5 recombinant protein. (Expected MW is 32.9 kDa)



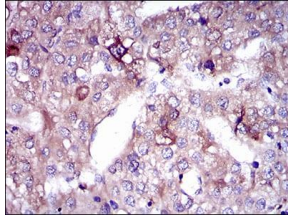
Western blot analysis using SLC27A5 mAb against HEK293 (1) and SLC27A5 (AA: 508-570)-hlgGfC transfected HEK293 (2) cell lysate.



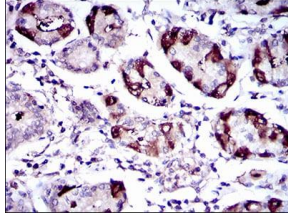
Western blot analysis using SLC27A5 mouse mAb against 3T3-L1 (1) and COS7 (2) cell lysate.



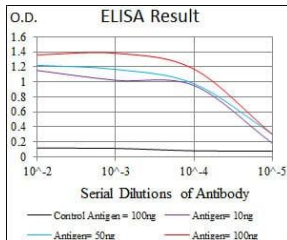
Flow cytometric analysis of SK-N-SH cells using SLC27A5 mouse mAb (green) and negative control (purple).



Immunohistochemical analysis of paraffin-embedded liver cancer tissues using SLC27A5 mouse mAb with DAB staining.



Immunohistochemical analysis of paraffin-embedded stomach tissues using SLC27A5 mouse mAb with DAB staining.



Black line: Control Antigen (100 ng); Purple line: Antigen(10ng); Blue line: Antigen (50 ng); Red line: Antigen (100 ng);

Storage

Store at 4°C short term. Aliquot and store at -20°C long term.

501 Changsheng S Rd, Nanhu Dist, Jiaxing, Zhejiang, China

Tel: 86 21 31007137 | E-mail: save@bt-laboratory.com | www.bt-laboratory.com