

Cytokeratin 5 Monoclonal Antibody

Description

Product type	Antibody
Code	BT-MCA2300
Host	Mouse
Isotype	Mouse IgG1
Size	100μL, 50μL
Immunogen	Purified recombinant fragment of Cytokeratin 5 expressed in E. Coli.
Mol wt	62.3kDa
Species reactivity	Human
Clonality	Monoclonal
Recommended application	WB
Concentration	N/A
Full name	N/A
Synonyms	K5;CK5;KRT5A;KRT5

This product is for research use only, not for use in human, therapeutic or diagnostic procedure.

Background

Cytokeratin 5, also known as CK5, KRT5. It is a member of the keratin gene family. Biochemically, most members of the CK family fall into one of two classes, type I (acidic polypeptides) and type II (basic polypeptides). The type II cytokeratins consist of basic or neutral proteins which are arranged in pairs of heterotypic keratin chains coexpressed during differentiation of simple and stratified epithelial tissues. This type II cytokeratin is specifically expressed in the basal layer of the epidermis with family member KRT14. The type II cytokeratins are clustered in a region of chromosome 12q12-q13. At least one member of the acidic family and one member of the basic family is expressed in all epithelial cells. Cytokeratin 5 is expressed in normal basal cells. Mutations of the Cytokeratin5 gene (KRT5) have been shown to result in the autosomal dominant disorder epidermolysis bullosa (EB). Defects in KRT5 are a cause of epidermolysis bullosa simplex.

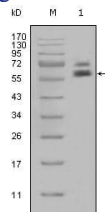
Recommended Dilution

WB: 1:500 - 1:2000

ELISA: 1:10000

Not yet tested in other applications.

Images



Western blot analysis using CK5 mouse mAb against HeLa cell lysate (1).

Storage

Store at 4°C short term. Aliquot and store at -20°C long term.