

RALB Monoclonal Antibody

Description

Product type	Antibody
Code	BT-MCA2312
Host	Mouse
Isotype	Mouse IgG2b
Size	100µL, 50µL
Immunogen	Purified recombinant fragment of human RALB (AA: 89-206) expressed in E. Coli.
Mol wt	23.4kDa
Species reactivity	Human,Mouse,Monkey
Clonality	Monoclonal
Recommended application	WB,IHC,FCM
Concentration	N/A
Full name	N/A
Synonyms	N

This product is for research use only, not for use in human, therapeutic or diagnostic procedure.

Background

N/A

Recommended Dilution

WB: 1:500 - 1:2000

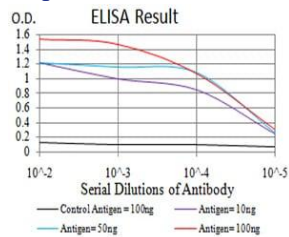
IHC-p: 1:200 - 1:1000

FCM: 1:200 - 1:400

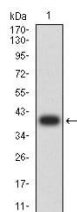
ELISA: 1:10000

Not yet tested in other applications.

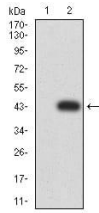
Images



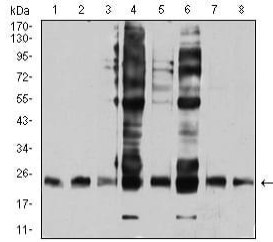
Black line: Control Antigen (100 ng);Purple line: Antigen (10ng); Blue line: Antigen (50 ng); Red line:Antigen (100 ng)



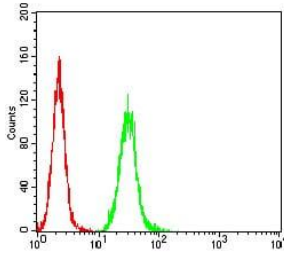
Western blot analysis using RALB mAb against human RALB (AA: 89-206) recombinant protein. (Expected MW is 39.7 kDa)



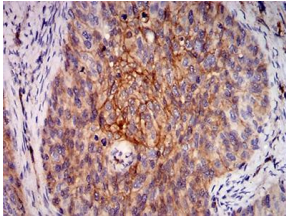
Western blot analysis using RALB mAb against HEK293 (1) and RALB (AA: 89-206)-hIgGFc transfected HEK293 (2) cell lysate.



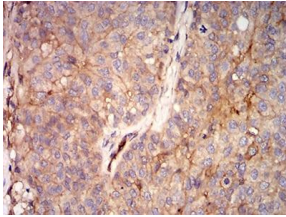
Western blot analysis using RALB mouse mAb against HepG2 (1), COS7 (2), NIH/3T3 (3), A549 (4), U251 (5), HT-29 (6), HEK293 (7), and LOVO (8) cell lysate.



Flow cytometric analysis of HeLa cells using RALB mouse mAb (green) and negative control (red).



Immunohistochemical analysis of paraffin-embedded cervical cancer tissues using RALB mouse mAb with DAB staining.



Immunohistochemical analysis of paraffin-embedded bladder cancer tissues using RALB mouse mAb with DAB staining.

Storage

Store at 4°C short term. Aliquot and store at -20°C long term.

501 Changsheng S Rd, Nanhu Dist, Jiaxing, Zhejiang, China

Tel: 86 21 31007137 | E-mail: save@bt-laboratory.com | www.bt-laboratory.com