

CD34 Monoclonal Antibody

Description

Product type	Antibody
Code	BT-MCA2320
Host	Mouse
Isotype	Mouse IgG1
Size	100μL, 50μL
Immunogen	Purified recombinant fragment of human CD34 (AA: extra 32-290) expressed in E. Coli.
Mol wt	40.7kDa
Species reactivity	Others
Clonality	Monoclonal
Recommended application	IHC,FCM
Concentration	N/A
Full name	N/A
Synonyms	N/A

This product is for research use only, not for use in human, therapeutic or diagnostic procedure.

Background

The protein encoded by this gene may play a role in the attachment of stem cells to the bone marrow extracellular matrix or to stromal cells. This single-pass membrane protein is highly glycosylated and phosphorylated by protein kinase C. Two transcript variants encoding different isoforms have been found for this gene.

Recommended Dilution

WB: 1:500 - 1:2000

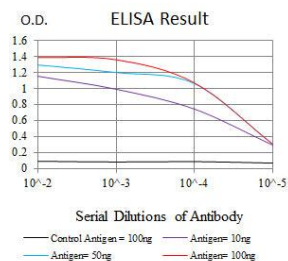
IHC-p: 1:200 - 1:1000

FCM: 1:200 - 1:400

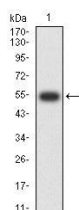
ELISA: 1:10000

Not yet tested in other applications.

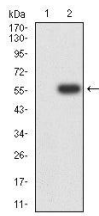
Images



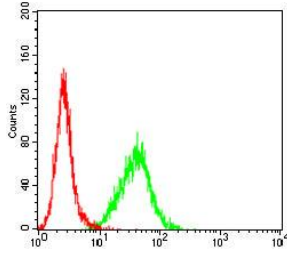
Black line: Control Antigen (100 ng);Purple line: Antigen (10ng); Blue line: Antigen (50 ng); Red line:Antigen (100 ng)



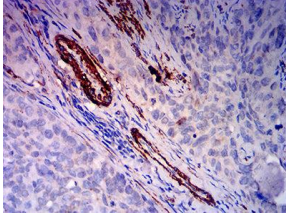
Western blot analysis using CD34 mAb against human CD34 (AA: extra 32-290) recombinant protein. (Expected MW is 53.3 kDa)



Western blot analysis using CD34 mAb against HEK293-6e (1) and CD34 (AA: extra 32-290)-hlgGFc transfected HEK293-6e (2) cell lysate.



Flow cytometric analysis of THP-1 cells using CD34 mouse mAb (green) and negative control (red).



Immunohistochemical analysis of paraffin-embedded cervical cancer tissues using CD34 mouse mAb with DAB staining.



Immunohistochemical analysis of paraffin-embedded muscle tissues using CD34 mouse mAb with DAB staining.

Storage

Store at 4°C short term. Aliquot and store at -20°C long term.

501 Changsheng S Rd, Nanhu Dist, Jiaxing, Zhejiang, China

Tel: 86 21 31007137 | E-mail: save@bt-laboratory.com | www.bt-laboratory.com