

## KAT7 Monoclonal Antibody

### Description

<b>Product type</b>	Antibody
<b>Code</b>	BT-MCA2328
<b>Host</b>	Mouse
<b>Isotype</b>	Mouse IgG1
<b>Size</b>	100µL, 50µL
<b>Immunogen</b>	Purified recombinant fragment of human KAT7 (AA: 1-200) expressed in E. Coli.
<b>Mol wt</b>	70.6kDa
<b>Species reactivity</b>	Human,Mouse,Monkey
<b>Clonality</b>	Monoclonal
<b>Recommended application</b>	WB,IHC
<b>Concentration</b>	N/A
<b>Full name</b>	N/A
<b>Synonyms</b>	HBO1;HBOA;MYST2;ZC2HC7

This product is for research use only, not for use in human, therapeutic or diagnostic procedure.

### Background

The protein encoded by this gene is part of the multimeric HBO1 complex, which possesses histone H4-specific acetyltransferase activity. This activity is required for functional replication origins and is involved in transcriptional activation of some genes. In both cases, the acetylation of histone H4 helps unfold chromatin so that the DNA can be accessed and replicated or transcribed. [provided by RefSeq, Oct 2016]

### Recommended Dilution

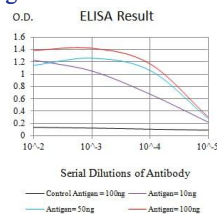
WB: 1:500 - 1:2000

IHC-p: 1:200 - 1:1000

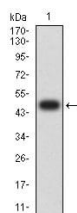
ELISA: 1:10000

Not yet tested in other applications.

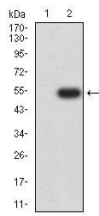
### Images



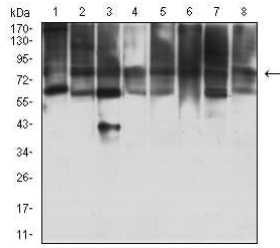
Black line: Control Antigen (100 ng);Purple line: Antigen (10ng); Blue line: Antigen (50 ng); Red line:Antigen (100 ng)



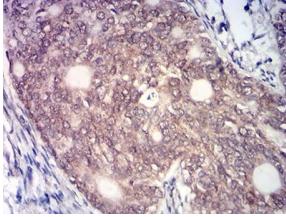
Western blot analysis using KAT7 mAb against human KAT7 (AA: 1-200) recombinant protein. (Expected MW is 48.1 kDa)



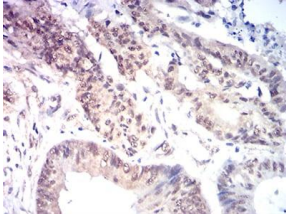
Western blot analysis using KAT7 mAb against HEK293 (1) and KAT7 (AA: 1-200)-hIgGFc transfected HEK293 (2) cell lysate.



Western blot analysis using KAT7 mouse mAb against MOLT4 (1), COS7 (2), F9 (3), HepG2 (4), PC-2 (5), U251 (6), MCF-7 (7), and NIH/3T3 (8) cell lysate.



Immunohistochemical analysis of paraffin-embedded cervical cancer tissues using KAT7 mouse mAb with DAB staining.



Immunohistochemical analysis of paraffin-embedded colon cancer tissues using KAT7 mouse mAb with DAB staining.

### Storage

Store at 4°C short term. Aliquot and store at -20°C long term.

501 Changsheng S Rd, Nanhu Dist, Jiaxing, Zhejiang, China

Tel: 86 21 31007137 | E-mail: [save@bt-laboratory.com](mailto:save@bt-laboratory.com) | [www.bt-laboratory.com](http://www.bt-laboratory.com)