

ERBB3 Monoclonal Antibody

Description

Product type	Antibody
Code	BT-MCA2329
Host	Mouse
Isotype	Mouse IgG1
Size	100µL, 50µL
Immunogen	Purified recombinant extracellular fragment of human ERBB3 (aa22-369) fused with hIgGFc tag expressed in HEK293 cells.
Mol wt	148kDa
Species reactivity	Human
Clonality	Monoclonal
Recommended application	ICC
Concentration	N/A
Full name	N/A
Synonyms	HER3;c-erbB3

This product is for research use only, not for use in human, therapeutic or diagnostic procedure.

Background

ERBB3, v-erb-b2 erythroblastic leukemia viral oncogene homolog 3 (avian). It is a member of the epidermal growth factor receptor (EGFR) family of receptor tyrosine kinases. This membrane-bound protein has a neuregulin binding domain but not an active kinase domain. It therefore can bind this ligand but not convey the signal into the cell through protein phosphorylation. However, it does form heterodimers with other EGF receptor family members which do have kinase activity. Heterodimerization leads to the activation of pathways which lead to cell proliferation or differentiation. Amplification of this gene and/or overexpression of its protein have been reported in numerous cancers, including prostate, bladder, and breast tumors. Alternate transcriptional splice variants encoding different isoforms have been characterized. One isoform lacks the intermembrane region and is secreted outside the cell. This form acts to modulate the activity of the membrane-bound form. Additional splice variants have also been reported, but they have not been thoroughly characterized.

Recommended Dilution

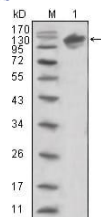
WB: 1:500 - 1:2000

ICC: 1:200 - 1:1000

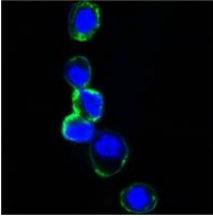
ELISA: 1:10000

Not yet tested in other applications.

Images



Western blot analysis using ERBB3 mouse mAb against human ERBB3 (aa22-369)-hIgGFc transfected HEK293 cell lysate (1).



Confocal Immunofluorescence analysis of HEK293 cells transfected with extracellular ERBB3 (aa22-369)-hIgGFc using ERBB3 mouse mAb (green). Blue: DRAQ5 fluorescent DNA dye.

Storage

Store at 4°C short term. Aliquot and store at -20°C long term.

501 Changsheng S Rd, Nanhu Dist, Jiaxing, Zhejiang, China

Tel: 86 21 31007137 | E-mail: save@bt-laboratory.com | www.bt-laboratory.com