

IL10RB Monoclonal Antibody

Description

Product type	Antibody
Code	BT-MCA2336
Host	Mouse
Isotype	Mouse IgG1
Size	100µL, 50µL
Immunogen	Purified recombinant fragment of human IL10RB (AA: extra 20-220) expressed in E. Coli.
Mol wt	37kDa
Species reactivity	Human,Rat
Clonality	Monoclonal
Recommended application	WB,FCM
Concentration	N/A
Full name	N/A
Synonyms	CRFB4;CRF2-4;D21S58;D21S66;CDW210B;IL-10R2

This product is for research use only, not for use in human, therapeutic or diagnostic procedure.

Background

The protein encoded by this gene belongs to the cytokine receptor family. It is an accessory chain essential for the active interleukin 10 receptor complex. Coexpression of this and IL10RA proteins has been shown to be required for IL10-induced signal transduction. This gene and three other interferon receptor genes, IFAR2, IFNAR1, and IFNGR2, form a class II cytokine receptor gene cluster located in a small region on chromosome 21.

Recommended Dilution

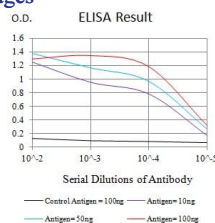
WB: 1:500 - 1:2000

FCM: 1:200 - 1:400

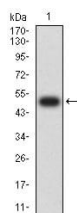
ELISA: 1:10000

Not yet tested in other applications.

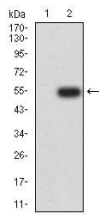
Images



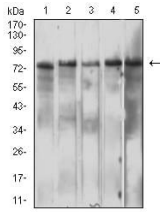
Black line: Control Antigen (100 ng);Purple line: Antigen (10ng); Blue line: Antigen (50 ng); Red line:Antigen (100 ng)



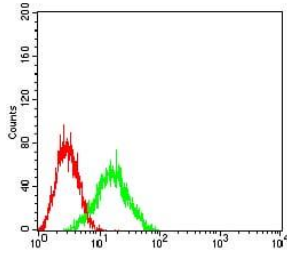
Western blot analysis using IL10RB mAb against human IL10RB (AA: extra 20-220) recombinant protein. (Expected MW is 49.5 kDa)



Western blot analysis using IL10RB mAb against HEK293 (1) and IL10RB (AA: extra 20-220)-hlgGFc transfected HEK293 (2) cell lysate.



Western blot analysis using IL10RB mouse mAb against HeLa (1), Jurkat (2), Ramos (3), Raji (4), and C6 (5) cell lysate.



Flow cytometric analysis of HL-60 cells using IL10RB mouse mAb (green) and negative control (red).

Storage

Store at 4°C short term. Aliquot and store at -20°C long term.

501 Changsheng S Rd, Nanhu Dist, Jiaxing, Zhejiang, China

Tel: 86 21 31007137 | E-mail: save@bt-laboratory.com | www.bt-laboratory.com