

PGR Monoclonal Antibody

Description

Product type	Antibody
Code	BT-MCA2340
Host	Mouse
Isotype	Mouse IgG1
Size	100µL, 50µL
Immunogen	Purified recombinant fragment of human PGR (AA:166-411) expressed in E. Coli.
Mol wt	99KDa
Species reactivity	Others
Clonality	Monoclonal
Recommended application	WB,IHC,FCM
Concentration	N/A
Full name	N/A
Synonyms	PR;NR3C3

This product is for research use only, not for use in human, therapeutic or diagnostic procedure.

Background

This gene encodes a member of the steroid receptor superfamily. The encoded protein mediates the physiological effects of progesterone, which plays a central role in reproductive events associated with the establishment and maintenance of pregnancy. This gene uses two distinct promoters and translation start sites in the first exon to produce several transcript variants, both protein coding and non-protein coding. Two of the isoforms (A and B) are identical except for an additional 165 amino acids found in the N-terminus of isoform B and mediate their own response genes and physiologic effects with little overlap.

Recommended Dilution

WB: 1:500 - 1:2000

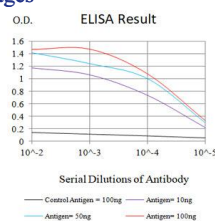
IHC-p: 1:200-1:1000

FCM: 1:200-1:400

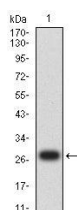
ELISA: 1:10000

Not yet tested in other applications.

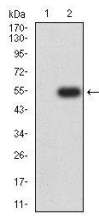
Images



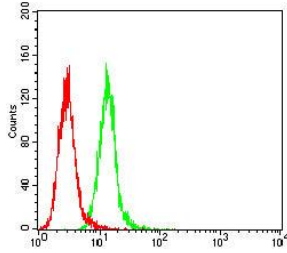
Black line: Control Antigen (100 ng); Purple line: Antigen (10ng); Blue line: Antigen (50 ng); Red line: Antigen (100 ng)



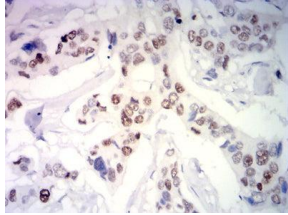
Western blot analysis using PGR mAb against human PGR (AA: 166-411) recombinant protein. (Expected MW is 27.8 kDa)



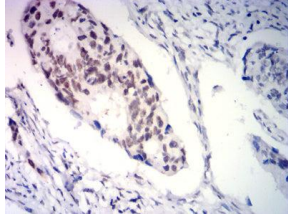
Western blot analysis using PGR mAb against HEK293-6e (1) and PGR (AA: 166-411)-hlgGFc transfected HEK293-6e (2) cell lysate.



Flow cytometric analysis of HeLa cells using PGR mouse mAb (green) and negative control (red).



Immunohistochemical analysis of paraffin-embedded breast cancer tissues using PGR mouse mAb with DAB staining.



Immunohistochemical analysis of paraffin-embedded rectal cancer tissues using PGR mouse mAb with DAB staining.

Storage

Store at 4°C short term. Aliquot and store at -20°C long term.

501 Changsheng S Rd, Nanhu Dist, Jiaxing, Zhejiang, China

Tel: 86 21 31007137 | E-mail: save@bt-laboratory.com | www.bt-laboratory.com