

CD18 Monoclonal Antibody

Description

Product type	Antibody
Code	BT-MCA2343
Host	Mouse
Isotype	Mouse IgG1
Size	100µL, 50µL
Immunogen	Purified recombinant fragment of human CD18 (AA: extra 559-700) expressed in E. Coli.
Mol wt	84.8kDa
Species reactivity	Human
Clonality	Monoclonal
Recommended application	WB,FCM
Concentration	N/A
Full name	N/A
Synonyms	ITGB2;LAD;CD18;MF17;MF17;LCAMB;LFA-1;MAC-1

This product is for research use only, not for use in human, therapeutic or diagnostic procedure.

Background

This gene encodes an integrin beta chain, which combines with multiple different alpha chains to form different integrin heterodimers. Integrins are integral cell-surface proteins that participate in cell adhesion as well as cell-surface mediated signalling. The encoded protein plays an important role in immune response and defects in this gene cause leukocyte adhesion deficiency. Alternative splicing results in multiple transcript variants.

Recommended Dilution

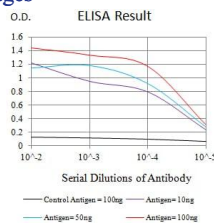
WB: 1:500 - 1:2000

FCM: 1:200 - 1:400

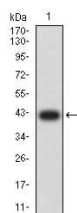
ELISA: 1:10000

Not yet tested in other applications.

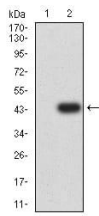
Images



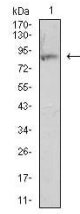
Black line: Control Antigen (100 ng);Purple line: Antigen (10ng); Blue line: Antigen (50 ng); Red line:Antigen (100 ng)



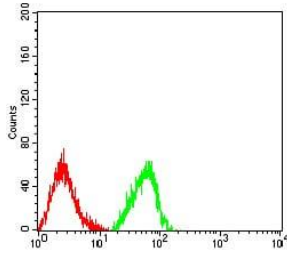
Western blot analysis using CD18 mAb against human CD18 (AA: extra 559-700) recombinant protein. (Expected MW is 41.5 kDa)



Western blot analysis using CD18 mAb against HEK293 (1) and CD18 (AA: extra 559-700)-hIgGfc transfected HEK293 (2) cell lysate.



Western blot analysis using CD18 mouse mAb against HL-60 (1) cell lysate.



Flow cytometric analysis of HL-60 cells using CD18 mouse mAb (green) and negative control (red).

Storage

Store at 4°C short term. Aliquot and store at -20°C long term.

501 Changsheng S Rd, Nanhu Dist, Jiaxing, Zhejiang, China

Tel: 86 21 31007137 | E-mail: save@bt-laboratory.com | www.bt-laboratory.com