

TSPAN16 Monoclonal Antibody

Description

Product type	Antibody
Code	BT-MCA2361
Host	Mouse
Isotype	Mouse IgG1
Size	100µL, 50µL
Immunogen	Purified recombinant fragment of human TSPAN16 (AA: 116-245) expressed in E. Coli.
Mol wt	26.2kDa
Species reactivity	Others
Clonality	Monoclonal
Recommended application	WB,IHC,FCM
Concentration	N/A
Full name	N/A
Synonyms	TM-8;TM4-B;TM4SF16

This product is for research use only, not for use in human, therapeutic or diagnostic procedure.

Background

The protein encoded by this gene is a member of the transmembrane 4 superfamily, also known as the tetraspanin family. Most of these members are cell-surface proteins that are characterized by the presence of four hydrophobic domains. The proteins mediate signal transduction events that play a role in the regulation of cell development, activation, growth and motility. This encoded protein might couple to signal transduction pathways and possibly modulate cellular activation and adhesion in haemopoietic and neural tissue. Several transcript variants encoding different isoforms have been found for this gene.

Recommended Dilution

WB: 1:500 - 1:2000

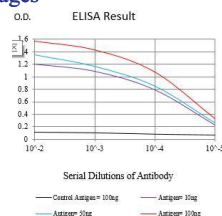
IHC-p: 1:200 - 1:1000

FCM: 1:200 - 1:400

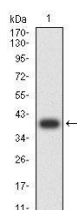
ELISA: 1:10000

Not yet tested in other applications.

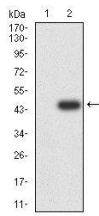
Images



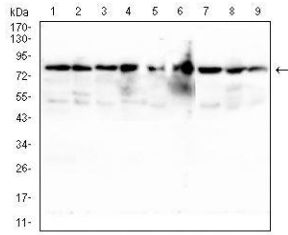
Black line: Control Antigen (100 ng);Purple line: Antigen (10ng); Blue line: Antigen (50 ng); Red line:Antigen (100 ng)



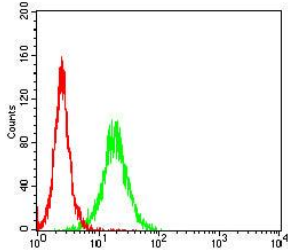
Western blot analysis using TSPAN16 mAb against human TSPAN16 (AA: 116-245) recombinant protein. (Expected MW is 40.3 kDa)



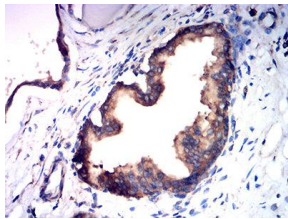
Western blot analysis using TSPAN16 mAb against HEK293-6e (1) and TSPAN16 (AA: 116-245)-hlgGFc transfected HEK293-6e (2) cell lysate.



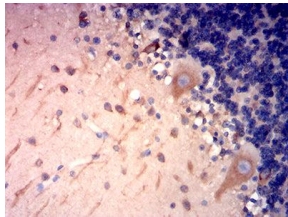
Western blot analysis using TSPAN16 mouse mAb against Raji (1), HL-60 (2), HeLa (3), A549 (4), THP-1 (5), Mouse liver (6), C6 (7), COS7 (8) and Jurkat (9) cell lysate.



Flow cytometric analysis of U937 cells using TSPAN16 mouse mAb (green) and negative control (red).



Immunohistochemical analysis of paraffin-embedded prostate cancer tissues using TSPAN16 mouse mAb with DAB staining.



Immunohistochemical analysis of paraffin-embedded cerebellum tissues using TSPAN16 mouse mAb with DAB staining.

Storage

Store at 4°C short term. Aliquot and store at -20°C long term.

501 Changsheng S Rd, Nanhu Dist, Jiaxing, Zhejiang, China

Tel: 86 21 31007137 | E-mail: save@bt-laboratory.com | www.bt-laboratory.com