

LRRK2 Monoclonal Antibody

Description

Product type	Antibody
Code	BT-MCA2374
Host	Mouse
Isotype	Mouse IgG1
Size	100µL, 50µL
Immunogen	Purified recombinant fragment of human LRRK2 (AA: 300-530) expressed in E. Coli.
Mol wt	286kDa
Species reactivity	Human
Clonality	Monoclonal
Recommended application	ICC,FCM
Concentration	N/A
Full name	N/A
Synonyms	PARK8;RIPK7;ROCO2;AURA17;DARDARIN

This product is for research use only, not for use in human, therapeutic or diagnostic procedure.

Background

This gene is a member of the leucine-rich repeat kinase family and encodes a protein with an ankryin repeat region, a leucine-rich repeat (LRR) domain, a kinase domain, a DFG-like motif, a RAS domain, a GTPase domain, a MLK-like domain, and a WD40 domain. The protein is present largely in the cytoplasm but also associates with the mitochondrial outer membrane. Mutations in this gene have been associated with Parkinson disease-8.

Recommended Dilution

WB: 1:500 - 1:2000

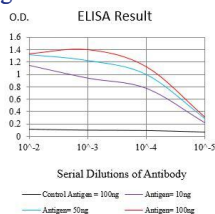
ICC: 1:50 - 1:200

FCM: 1:200 - 1:400

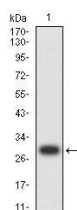
ELISA: 1:10000

Not yet tested in other applications.

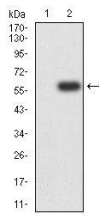
Images



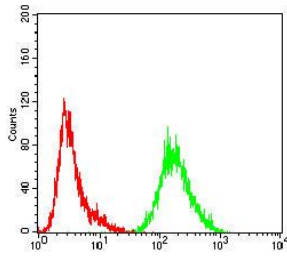
Black line: Control Antigen (100 ng);Purple line: Antigen (10ng); Blue line: Antigen (50 ng); Red line:Antigen (100 ng)



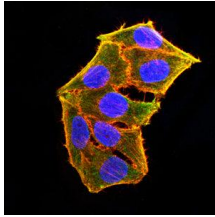
Western blot analysis using LRRK2 mAb against human LRRK2 (AA: 300-530) recombinant protein. (Expected MW is 29.3 kDa)



Western blot analysis using LRRK2 mAb against HEK293-6e (1) and LRRK2 (AA: 300-530)-hlgGFc transfected HEK293-6e (2) cell lysate.



Flow cytometric analysis of HeLa cells using LRRK2 mouse mAb (green) and negative control (red).



Immunofluorescence analysis of HeLa cells using LRRK2 mouse mAb (green). Blue: DRAQ5 fluorescent DNA dye. Red: Actin filaments have been labeled with Alexa Fluor-555 phalloidin. Secondary antibody from Fisher (Cat#: 35503)

Storage

Store at 4°C short term. Aliquot and store at -20°C long term.

501 Changsheng S Rd, Nanhu Dist, Jiaxing, Zhejiang, China

Tel: 86 21 31007137 | E-mail: save@bt-laboratory.com | www.bt-laboratory.com