

PLIN3 Monoclonal Antibody

Description

Product type	Antibody
Code	BT-MCA2378
Host	Mouse
Isotype	Mouse IgG2a
Size	100µL, 50µL
Immunogen	Purified recombinant fragment of human PLIN3 expressed in E. Coli.
Mol wt	47kDa
Species reactivity	Human
Clonality	Monoclonal
Recommended application	WB,ICC,FCM
Concentration	N/A
Full name	N/A
Synonyms	PP17;TIP47;M6PRBP1

This product is for research use only, not for use in human, therapeutic or diagnostic procedure.

Background

Mannose 6-phosphate receptors (MPRs) deliver lysosomal hydrolase from the Golgi to endosomes and then return to the Golgi complex. The protein encoded by this gene interacts with the cytoplasmic domains of both cation-independent and cation-dependent MPRs, and is required for endosome-to-Golgi transport. This protein also binds directly to the GTPase RAB9 (RAB9A), a member of the RAS oncogene family. The interaction with RAB9 has been shown to increase the affinity of this protein for its cargo. Multiple transcript variants encoding different isoforms have been found for this gene.

Recommended Dilution

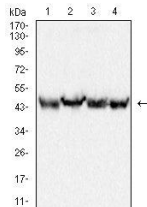
WB: 1:500 - 1:2000

ICC: 1:100 - 1:500

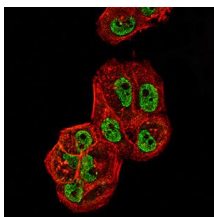
FCM: 1:200 - 1:400

Not yet tested in other applications.

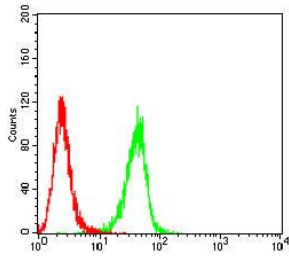
Images



Western blot analysis using PLIN3 mouse mAb against THP-1 (1), HepG2 (2), K562 (3) and HeLa (4) cell lysate.



Immunofluorescence analysis of HeLa cells using PLIN3 mouse mAb (green). Blue: DRAQ5 fluorescent DNA dye. Red: Actin filaments have been labeled with Alexa Fluor- 555 phalloidin. Secondary antibody from Fisher (Cat#: 35503)



Flow cytometric analysis of HeLa cells using PLIN3 mouse mAb (green) and negative control (red).

Storage

Store at 4°C short term. Aliquot and store at -20°C long term.

501 Changsheng S Rd, Nanhu Dist, Jiaxing, Zhejiang, China

Tel: 86 21 31007137 | E-mail: save@bt-laboratory.com | www.bt-laboratory.com