

## ABCB5 Monoclonal Antibody

### Description

<b>Product type</b>	Antibody
<b>Code</b>	BT-MCA2410
<b>Host</b>	Mouse
<b>Isotype</b>	Mouse IgG1
<b>Size</b>	100µL, 50µL
<b>Immunogen</b>	Purified recombinant fragment of human ABCB5 (AA: 481-674) expressed in E. Coli.
<b>Mol wt</b>	89.8kDa
<b>Species reactivity</b>	Human
<b>Clonality</b>	Monoclonal
<b>Recommended application</b>	IHC,ICC,FCM
<b>Concentration</b>	N/A
<b>Full name</b>	N/A
<b>Synonyms</b>	ABCB5beta;EST422562;ABCB5alpha

**This product is for research use only, not for use in human, therapeutic or diagnostic procedure.**

### Background

ABCB5 belongs to the ATP-binding cassette (ABC) transporter superfamily of integral membrane proteins. These proteins participate in ATP-dependent transmembrane transport of structurally diverse molecules ranging from small ions, sugars, and peptides to more complex organic molecules

### Recommended Dilution

WB: 1:500 - 1:2000

IHC-p: 1:200 - 1:1000

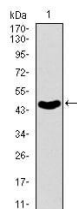
ICC: 1:200 - 1:1000

FCM: 1:200 - 1:400

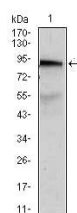
ELISA: 1:10000

Not yet tested in other applications.

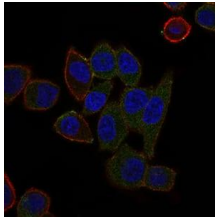
### Images



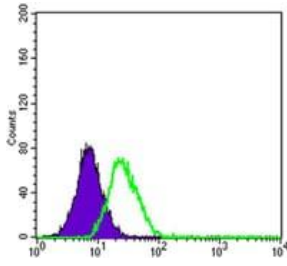
Western blot analysis using ABCB5 mAb against human ABCB5 recombinant protein. (Expected MW is 47 kDa)



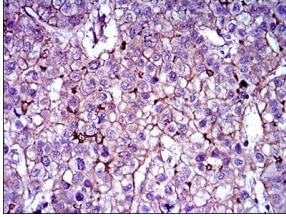
Western blot analysis using ABCB5 mouse mAb against A431 (1) cell lysate.



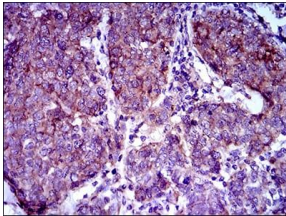
Immunofluorescence analysis of HepG2 cells using ABCB5 mouse mAb (green). Blue: DRAQ5 fluorescent DNA dye. Red: Actin filaments have been labeled with Alexa Fluor-555 phalloidin.



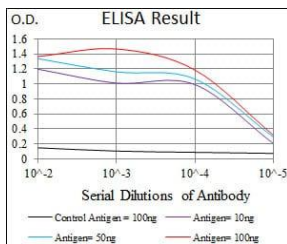
Flow cytometric analysis of HepG2 cells using ABCB5 mouse mAb (green) and negative control (purple).



Immunohistochemical analysis of paraffin-embedded liver cancer tissues using ABCB5 mouse mAb with DAB staining.



Immunohistochemical analysis of paraffin-embedded breast cancer tissues using ABCB5 mouse mAb with DAB staining.



Black line: Control Antigen (100 ng); Purple line: Antigen(10ng); Blue line: Antigen (50 ng); Red line: Antigen (100 ng);

### Storage

Store at 4°C short term. Aliquot and store at -20°C long term.

501 Changsheng S Rd, Nanhu Dist, Jiaxing, Zhejiang, China

Tel: 86 21 31007137 | E-mail: [save@bt-laboratory.com](mailto:save@bt-laboratory.com) | [www.bt-laboratory.com](http://www.bt-laboratory.com)