

CCL27 Monoclonal Antibody

Description

| | |
|--------------------------------|---|
| Product type | Antibody |
| Code | BT-MCA2427 |
| Host | Mouse |
| Isotype | Mouse IgG1 |
| Size | 100µL, 50µL |
| Immunogen | Purified recombinant fragment of human CCL27 (AA: 25-112) expressed in E. Coli. |
| Mol wt | 12.6kDa |
| Species reactivity | Others |
| Clonality | Monoclonal |
| Recommended application | IHC,ICC,FCM |
| Concentration | N/A |
| Full name | N/A |
| Synonyms | ALP;ILC;CTAK;CTACK;PESKY;ESKINE;SCYA27 |

This product is for research use only, not for use in human, therapeutic or diagnostic procedure.

Background

This gene is one of several CC cytokine genes clustered on the p-arm of chromosome 9. Cytokines are a family of secreted proteins involved in immunoregulatory and inflammatory processes. The CC cytokines are proteins characterized by two adjacent cysteines. The protein encoded by this gene is chemotactic for skin-associated memory T lymphocytes. This cytokine may also play a role in mediating homing of lymphocytes to cutaneous sites. It specifically binds to chemokine receptor 10 (CCR10). Studies of a similar murine protein indicate that these protein-receptor interactions have a pivotal role in T cell-mediated skin inflammation. [provided by RefSeq, Sep 2014]

Recommended Dilution

WB: 1:500 - 1:2000

IHC-p: 1:200 - 1:1000

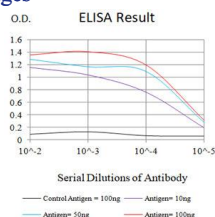
ICC: 1:200 - 1:1000

FCM: 1:200 - 1:400

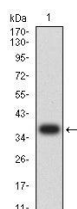
ELISA: 1:10000

Not yet tested in other applications.

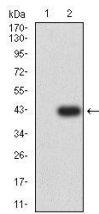
Images



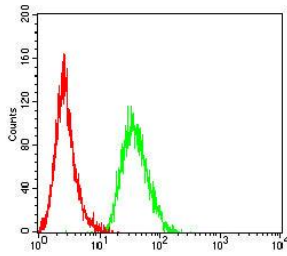
Black line: Control Antigen (100 ng);Purple line: Antigen (10ng); Blue line: Antigen (50 ng); Red line:Antigen (100 ng)



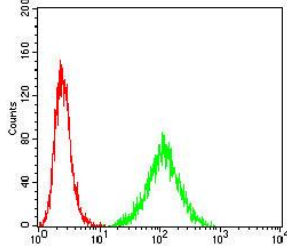
Western blot analysis using CCL27 mAb against human CCL27 (AA: 25-112) recombinant protein. (Expected MW is 36 kDa)



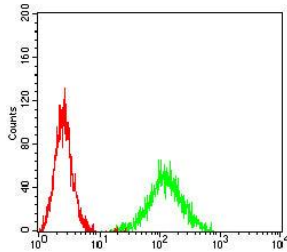
Western blot analysis using CCL27 mAb against HEK293-6e (1) and CCL27 (AA: 25-112)-hlgGFc transfected HEK293-6e (2) cell lysate.



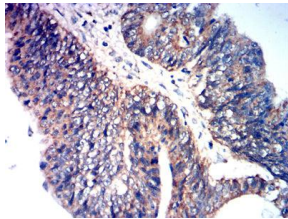
Flow cytometric analysis of HepG2 cells using CCL27 mouse mAb (green) and negative control (red).



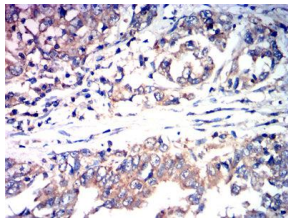
Flow cytometric analysis of HeLa cells using CCL27 mouse mAb (green) and negative control (red).



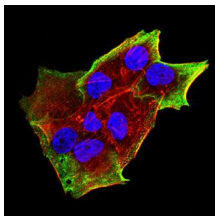
Flow cytometric analysis of A431 cells using CCL27 mouse mAb (green) and negative control (red).



Immunohistochemical analysis of paraffin-embedded rectal cancer tissues using CCL27 mouse mAb with DAB staining.



Immunohistochemical analysis of paraffin-embedded stomach cancer tissues using CCL27 mouse mAb with DAB staining.



Immunofluorescence analysis of HeLa cells using CCL27 mouse mAb (green). Blue: DRAQ5 fluorescent DNA dye. Red: Actin filaments have been labeled with Alexa Fluor-555 phalloidin. Secondary antibody from Fisher (Cat#: 35503)

Storage

Store at 4°C short term. Aliquot and store at -20°C long term.

