

## ERN1 Monoclonal Antibody

### Description

<b>Product type</b>	Antibody
<b>Code</b>	BT-MCA2430
<b>Host</b>	Mouse
<b>Isotype</b>	Mouse IgG1
<b>Size</b>	100µL, 50µL
<b>Immunogen</b>	Purified recombinant fragment of human ERN1(aa282-433) expressed in E. Coli.
<b>Mol wt</b>	109kDa
<b>Species reactivity</b>	Human
<b>Clonality</b>	Monoclonal
<b>Recommended application</b>	WB,IHC
<b>Concentration</b>	N/A
<b>Full name</b>	N/A
<b>Synonyms</b>	IRE1;IRE1P;IRE1a;hIRE1p;FLJ30999;MGC163277;MGC163279;ERN1

This product is for research use only, not for use in human, therapeutic or diagnostic procedure.

### Background

The protein encoded by this gene is the ER to nucleus signalling 1 protein, a human homologue of the yeast Ire1 gene product. This protein possesses intrinsic kinase activity and an endoribonuclease activity and it is important in altering gene expression as a response to endoplasmic reticulum-based stress signals.

### Recommended Dilution

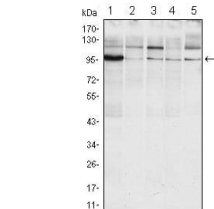
WB: 1:500 - 1:2000

IHC-p: 1:200 - 1:1000

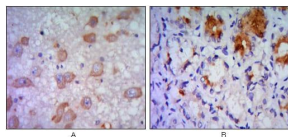
ELISA: 1:10000

Not yet tested in other applications.

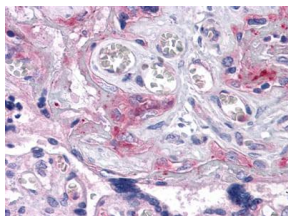
### Images



Western blot analysis using ERN1 mouse mAb against Raji (1), A431 (2), Jurkat (3), HeLa(4) and HEK293 (5) cell lysate.



Immunohistochemical analysis of paraffin-embedded human brain tissue (A) and stomach tissue (B), showing cytoplasmic localization using ERN1 mouse mAb with DAB staining.



Immunohistochemical analysis of paraffin-embedded human Placenta tissues using ERN1 mouse mAb

## Storage

Store at 4°C short term. Aliquot and store at -20°C long term.

501 Changsheng S Rd, Nanhu Dist, Jiaxing, Zhejiang, China

Tel: 86 21 31007137 | E-mail: [save@bt-laboratory.com](mailto:save@bt-laboratory.com) | [www.bt-laboratory.com](http://www.bt-laboratory.com)