

P2RY1 Monoclonal Antibody

Description

Product type	Antibody
Code	BT-MCA2434
Host	Mouse
Isotype	Mouse IgG2b
Size	100µL, 50µL
Immunogen	Purified recombinant fragment of human P2RY1 (AA: extra mix) expressed in E. Coli.
Mol wt	42kDa
Species reactivity	Human,Rat
Clonality	Monoclonal
Recommended application	WB,IHC,FCM
Concentration	N/A
Full name	N/A
Synonyms	P2Y1

This product is for research use only, not for use in human, therapeutic or diagnostic procedure.

Background

N/A

Recommended Dilution

WB: 1:500 - 1:2000

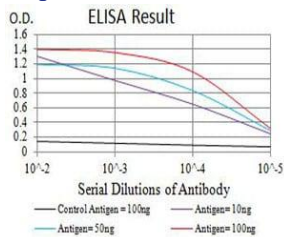
IHC-p: 1:200 - 1:1000

FCM: 1:200 - 1:400

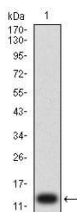
ELISA: 1:10000

Not yet tested in other applications.

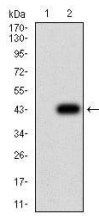
Images



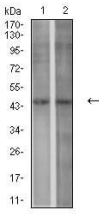
Black line: Control Antigen (100 ng);Purple line: Antigen (10ng); Blue line: Antigen (50 ng); Red line:Antigen (100 ng)



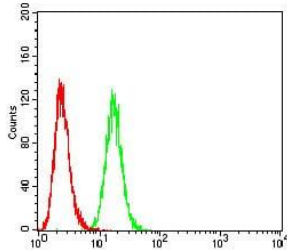
Western blot analysis using P2RY1 mAb against human P2RY1 (AA: extra mix) recombinant protein. (Expected MW is 13 kDa)



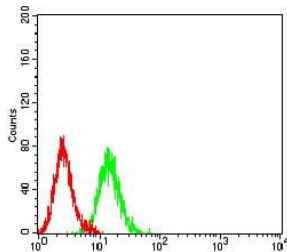
Western blot analysis using P2RY1 mAb against HEK293 (1) and P2RY1 (AA: extra mix)-hIgGFc transfected HEK293 (2) cell lysate.



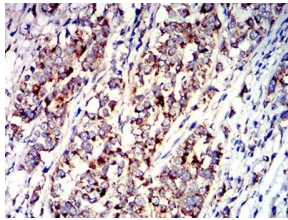
Western blot analysis using P2RY1 mouse mAb against SPC-A-1 (1) and C6 (2) cell lysate.



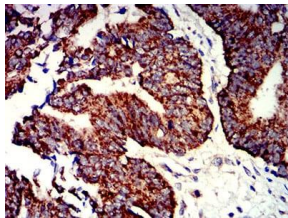
Flow cytometric analysis of HeLa cells using P2RY1 mouse mAb (green) and negative control (red).



Flow cytometric analysis of K562 cells using P2RY1 mouse mAb (green) and negative control (red).



Immunohistochemical analysis of paraffin-embedded bladder cancer tissues using P2RY1 mouse mAb with DAB staining.



Immunohistochemical analysis of paraffin-embedded rectum cancer tissues using P2RY1 mouse mAb with DAB staining.

Storage

Store at 4°C short term. Aliquot and store at -20°C long term.

501 Changsheng S Rd, Nanhu Dist, Jiaxing, Zhejiang, China

Tel: 86 21 31007137 | E-mail: save@bt-laboratory.com | www.bt-laboratory.com