

BCL11B Monoclonal Antibody

Description

Product type	Antibody
Code	BT-MCA2435
Host	Mouse
Isotype	Mouse IgG1
Size	100µL, 50µL
Immunogen	Purified recombinant fragment of human BCL11B (AA: 1-150) expressed in E. Coli.
Mol wt	95.5kDa
Species reactivity	Human
Clonality	Monoclonal
Recommended application	IHC,ICC,FCM
Concentration	N/A
Full name	N/A
Synonyms	ATL1;RIT1;CTIP2;IMD49;CTIP-2;ZNF856B;ATL1-beta;ATL1-alpha;ATL1-delta;ATL1-gamma;hRIT1-alpha

This product is for research use only, not for use in human, therapeutic or diagnostic procedure.

Background

N/A

Recommended Dilution

WB: 1:500 - 1:2000

IHC-p: 1:200 - 1:1000

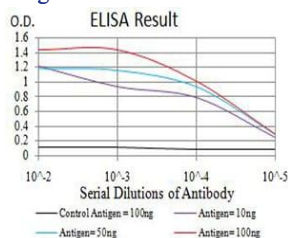
ICC: 1:50 - 1:250

FCM: 1:200 - 1:400

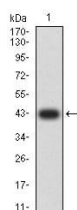
ELISA: 1:10000

Not yet tested in other applications.

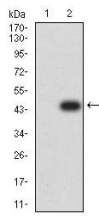
Images



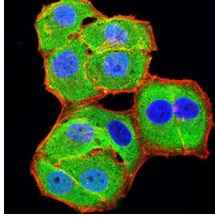
Black line: Control Antigen (100 ng);Purple line: Antigen (10ng); Blue line: Antigen (50 ng); Red line:Antigen (100 ng)



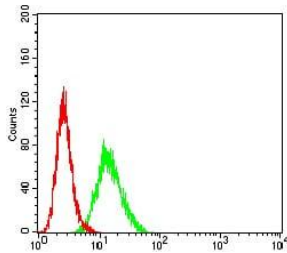
Western blot analysis using BCL11B mAb against human BCL11B (AA: 1-150) recombinant protein. (Expected MW is 42.3 kDa)



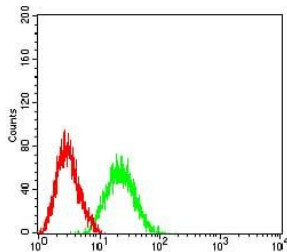
Western blot analysis using BCL11B mAb against HEK293 (1) and BCL11B (AA: 1-150)-hIgGFc transfected HEK293 (2) cell lysate.



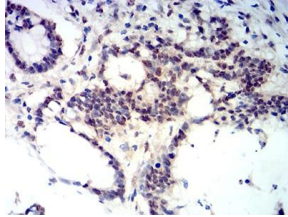
Immunofluorescence analysis of HeLa cells using BCL11B mouse mAb (green). Blue: DRAQ5 fluorescent DNA dye. Red: Actin filaments have been labeled with Alexa Fluor- 555 phalloidin. Secondary antibody from Fisher (Cat#: 35503)



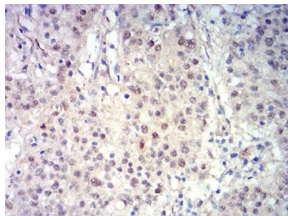
Flow cytometric analysis of HeLa cells using BCL11B mouse mAb (green) and negative control (red).



Flow cytometric analysis of Jurkat cells using BCL11B mouse mAb (green) and negative control (red).



Immunohistochemical analysis of paraffin-embedded colon cancer tissues using BCL11B mouse mAb with DAB staining.



Immunohistochemical analysis of paraffin-embedded stomach cancer tissues using BCL11B mouse mAb with DAB staining.

Storage

Store at 4°C short term. Aliquot and store at -20°C long term.

501 Changsheng S Rd, Nanhui Dist, Jiaxing, Zhejiang, China

Tel: 86 21 31007137 | E-mail: save@bt-laboratory.com | www.bt-laboratory.com