

CD156B Monoclonal Antibody

Description

Product type	Antibody
Code	BT-MCA2466
Host	Mouse
Isotype	Mouse IgG1
Size	100µL, 50µL
Immunogen	Purified recombinant fragment of human CD156B (AA: 497-671) expressed in E. Coli.
Mol wt	93kDa
Species reactivity	Human,Mouse
Clonality	Monoclonal
Recommended application	WB,ICC,FCM
Concentration	N/A
Full name	N/A
Synonyms	ADAM17;CSVP;TACE;NISBD;ADAM18;;NISBD1

This product is for research use only, not for use in human, therapeutic or diagnostic procedure.

Background

This gene encodes a member of the ADAM (a disintegrin and metalloprotease domain) family. Members of this family are membrane-anchored proteins structurally related to snake venom disintegrins, and have been implicated in a variety of biologic processes involving cell-cell and cell-matrix interactions, including fertilization, muscle development, and neurogenesis. The encoded preproprotein is proteolytically processed to generate the mature protease. The encoded protease functions in the ectodomain shedding of tumor necrosis factor-alpha, in which soluble tumor necrosis factor-alpha is released from the membrane-bound precursor. This protease also functions in the processing of numerous other substrates, including cell adhesion proteins, cytokine and growth factor receptors and epidermal growth factor (EGF) receptor ligands, and plays a prominent role in the activation of the Notch signaling pathway. Elevated expression of this gene has been observed in specific cell types derived from psoriasis, rheumatoid arthritis, multiple sclerosis and Crohn's disease patients, suggesting that the encoded protein may play a role in autoimmune disease. Additionally, this protease may play a role in viral infection through its cleavage of ACE2, the cellular receptor for SARS-CoV and SARS-CoV-2.

Recommended Dilution

WB: 1:500 - 1:2000

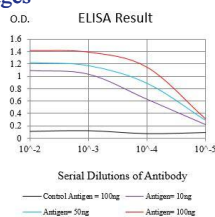
ICC: 1:200 - 1:1000

FCM: 1:200 - 1:400

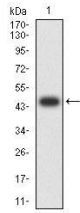
ELISA: 1:10000

Not yet tested in other applications.

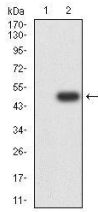
Images



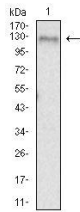
Black line: Control Antigen (100 ng);Purple line: Antigen (10ng); Blue line: Antigen (50 ng); Red line:Antigen (100 ng)



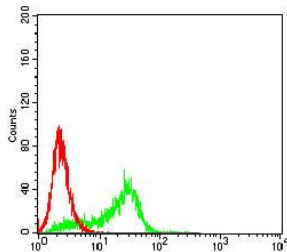
Western blot analysis using CD156B mAb against human CD156B (AA: 497-671) recombinant protein. (Expected MW is 45.3 kDa)



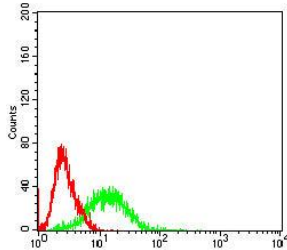
Western blot analysis using CD156B mAb against HEK293-6e (1) and CD156B (AA: 497-671)-hIgGFc transfected HEK293-6e (2) cell lysate.



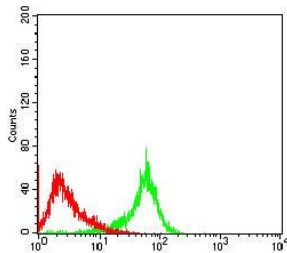
Western blot analysis using CD156B mouse mAb against Jurkat (1) cell lysate.



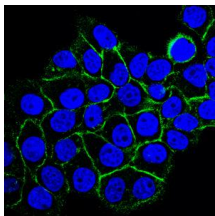
Flow cytometric analysis of HeLa cells using CD156B mouse mAb (green) and negative control (red).



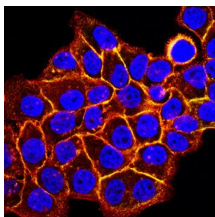
Flow cytometric analysis of NIH/3T3 cells using CD156B mouse mAb (green) and negative control (red).



Flow cytometric analysis of Raji cells using CD156B mouse mAb (green) and negative control (red).



Immunofluorescence analysis of HeLa cells using CD156B mouse mAb (green). Blue: DRAQ5 fluorescent DNA dye. Secondary antibody from Fisher (Cat#: 35503)



Immunofluorescence analysis of HeLa cells using CD156B mouse mAb (green). Blue: DRAQ5 fluorescent DNA dye. Red: Actin filaments have been labeled with Alexa Fluor- 555 phalloidin. Secondary antibody from Fisher (Cat#: 35503)

Storage

Store at 4°C short term. Aliquot and store at -20°C long term.

501 Changsheng S Rd, Nanhu Dist, Jiaxing, Zhejiang, China
Tel: 86 21 31007137 | E-mail: save@bt-laboratory.com | www.bt-laboratory.com