

RISP Monoclonal Antibody

Description

Product type	Antibody
Code	BT-MCA2468
Host	Mouse
Isotype	Mouse IgG2a
Size	100µL, 50µL
Immunogen	Purified recombinant fragment of human RISP (AA: 79-274) expressed in E. Coli.
Mol wt	30kDa
Species reactivity	Human
Clonality	Monoclonal
Recommended application	WB,ICC,FCM
Concentration	N/A
Full name	N/A
Synonyms	RIP1;RIS1;RISP;UQCR5;MC3DN10

This product is for research use only, not for use in human, therapeutic or diagnostic procedure.

Background

UQCRFS1 (Ubiquinol-Cytochrome C Reductase, Rieske Iron-Sulfur Polypeptide 1) is a Protein Coding gene. Diseases associated with UQCRFS1 include Mitochondrial Complex Iii Deficiency, Nuclear Type 10 and Lactic Acidosis. Among its related pathways are Pathways of neurodegeneration - multiple diseases and Cardiac muscle contraction. Gene Ontology (GO) annotations related to this gene include oxidoreductase activity and 2 iron, 2 sulfur cluster binding.

Recommended Dilution

WB: 1:500 - 1:2000

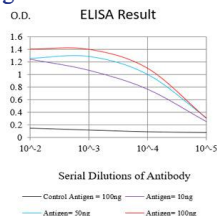
ICC: 1:200 - 1:1000

FCM: 1:200 - 1:400

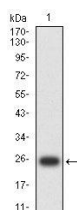
ELISA: 1:10000

Not yet tested in other applications.

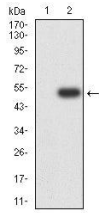
Images



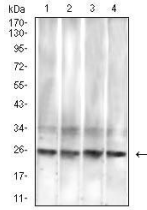
Black line: Control Antigen (100 ng);Purple line: Antigen (10ng); Blue line: Antigen (50 ng); Red line:Antigen (100 ng)



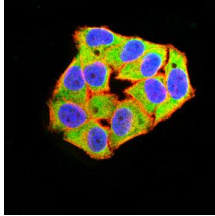
Western blot analysis using RISP mAb against human RISP (AA: 79-274) recombinant protein. (Expected MW is 24.5 kDa)



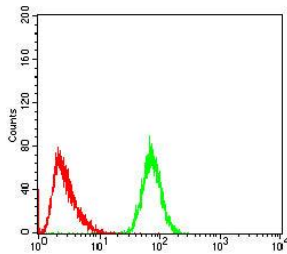
Western blot analysis using RISP mAb against HEK293-6e (1) and RISP (AA: 79-274)-hIgGFc transfected HEK293-6e (2) cell lysate.



Western blot analysis using RISP mouse mAb against A549 (1), Hela (2), Raji (3) and HepG2 (4) cell lysate.



Immunofluorescence analysis of HeLa cells using RISP mouse mAb (green). Blue: DRAQ5 fluorescent DNA dye. Red: Actin filaments have been labeled with Alexa Fluor- 555 phalloidin. Secondary antibody from Fisher (Cat#: 35503)



Flow cytometric analysis of HeLa cells using RISP mouse mAb (green) and negative control (red).

Storage

Store at 4°C short term. Aliquot and store at -20°C long term.

501 Changsheng S Rd, Nanhu Dist, Jiaxing, Zhejiang, China

Tel: 86 21 31007137 | E-mail: save@bt-laboratory.com | www.bt-laboratory.com