

TPSAB1 Monoclonal Antibody

Description

| | |
|--------------------------------|--|
| Product type | Antibody |
| Code | BT-MCA2470 |
| Host | Mouse |
| Isotype | Mouse IgG1 |
| Size | 100µL, 50µL |
| Immunogen | Purified recombinant fragment of human TPSAB1 (AA: 31-275) expressed in E. Coli. |
| Mol wt | 30.5kDa |
| Species reactivity | Human |
| Clonality | Monoclonal |
| Recommended application | IHC,ICC,FCM |
| Concentration | N/A |
| Full name | N/A |
| Synonyms | TPS1;TPS2;TPSB1;TPSB2;Tryptase-2 |

This product is for research use only, not for use in human, therapeutic or diagnostic procedure.

Background

Tryptases comprise a family of trypsin-like serine proteases, the peptidase family S1. Tryptases are enzymatically active only as heparin-stabilized tetramers, and they are resistant to all known endogenous proteinase inhibitors. Several tryptase genes are clustered on chromosome 16p13.3. These genes are characterized by several distinct features. They have a highly conserved 3' UTR and contain tandem repeat sequences at the 5' flank and 3' UTR which are thought to play a role in regulation of the mRNA stability. These genes have an intron immediately upstream of the initiator Met codon, which separates the site of transcription initiation from protein coding sequence. This feature is characteristic of tryptases but is unusual in other genes. The alleles of this gene exhibit an unusual amount of sequence variation, such that the alleles were once thought to represent two separate genes, alpha and beta 1. Beta tryptases appear to be the main isoenzymes expressed in mast cells; whereas in basophils, alpha tryptases predominate. Tryptases have been implicated as mediators in the pathogenesis of asthma and other allergic and inflammatory disorders.

Recommended Dilution

WB: 1:500 - 1:2000

IHC-p: 1:200 - 1:1000

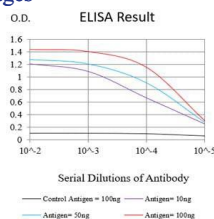
ICC: 1:200 - 1:1000

FCM: 1:200 - 1:400

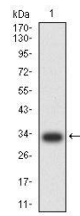
ELISA: 1:10000

Not yet tested in other applications.

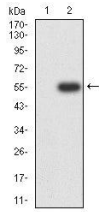
Images



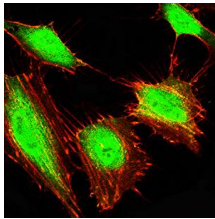
Black line: Control Antigen (100 ng);Purple line: Antigen (10ng); Blue line: Antigen (50 ng); Red line:Antigen (100 ng)



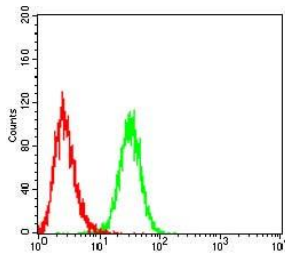
Western blot analysis using TPSAB1 mAb against human TPSAB1 (AA: 31-275) recombinant protein. (Expected MW is 30.3 kDa)



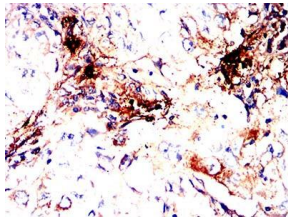
Western blot analysis using TPSAB1 mAb against HEK293-6e (1) and TPSAB1 (AA: 31-275)-hIgGFc transfected HEK293-6e (2) cell lysate.



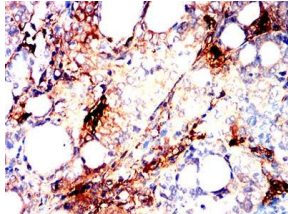
Immunofluorescence analysis of HeLa cells using TPSAB1 mouse mAb (green). Blue: DRAQ5 fluorescent DNA dye. Red: Actin filaments have been labeled with Alexa Fluor- 555 phalloidin. Secondary antibody from Fisher (Cat#: 35503)



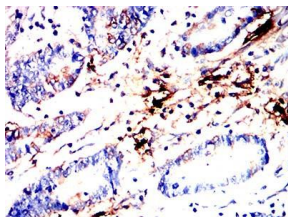
Flow cytometric analysis of HepG2 cells using TPSAB1 mouse mAb (green) and negative control (red).



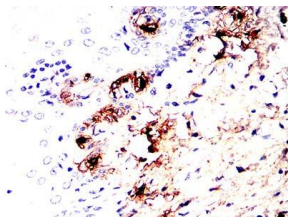
Immunohistochemical analysis of paraffin-embedded lung cancer tissues using TPSAB1 mouse mAb with DAB staining.



Immunohistochemical analysis of paraffin-embedded cervical cancer tissues using TPSAB1 mouse mAb with DAB staining.



Immunohistochemical analysis of paraffin-embedded colon cancer tissues using TPSAB1 mouse mAb with DAB staining.



Immunohistochemical analysis of paraffin-embedded esophageal tissue tissues using TPSAB1 mouse mAb with DAB staining.

Storage

Store at 4°C short term. Aliquot and store at -20°C long term.

501 Changsheng S Rd, Nanhu Dist, Jiaxing, Zhejiang, China
Tel: 86 21 31007137 | E-mail: save@bt-laboratory.com | www.bt-laboratory.com