

TUBA4A Monoclonal Antibody

Description

Product type	Antibody
Code	BT-MCA2475
Host	Mouse
Isotype	Mouse IgG2a
Size	100µL, 50µL
Immunogen	Purified recombinant fragment of human TUBA4A (AA: (299-447)) expressed in E. Coli.
Mol wt	50kDa
Species reactivity	Others
Clonality	Monoclonal
Recommended application	WB,IHC,FCM
Concentration	N/A
Full name	N/A
Synonyms	ALS22;TUBA1;H2-ALPHA

This product is for research use only, not for use in human, therapeutic or diagnostic procedure.

Background

Microtubules of the eukaryotic cytoskeleton perform essential and diverse functions and are composed of a heterodimer of alpha and beta tubulin. The genes encoding these microtubule constituents are part of the tubulin superfamily, which is composed of six distinct families. Genes from the alpha, beta and gamma tubulin families are found in all eukaryotes. The alpha and beta tubulins represent the major components of microtubules, while gamma tubulin plays a critical role in the nucleation of microtubule assembly. There are multiple alpha and beta tubulin genes and they are highly conserved among and between species. This gene encodes an alpha tubulin that is a highly conserved homolog of a rat testis-specific alpha tubulin. Alternatively spliced transcript variants encoding different isoforms have been found for this gene. [provided by RefSeq, Jun 2013]

Recommended Dilution

WB: 1:500 - 1:2000

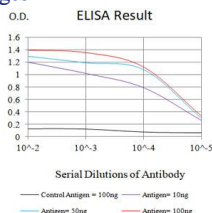
IHC-p: 1:200-1:1000

FCM: 1:200-1:400

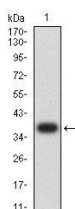
ELISA: 1:10000

Not yet tested in other applications.

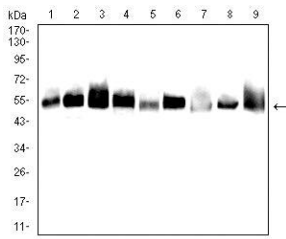
Images



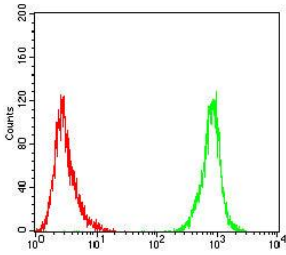
Black line: Control Antigen (100 ng);Purple line: Antigen (10ng); Blue line: Antigen (50 ng); Red line: Antigen (100 ng)



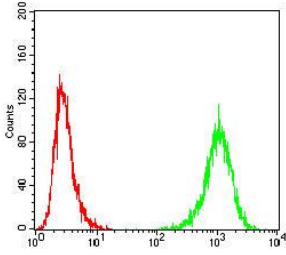
Western blot analysis using TUBA4A mAb against human TUBA4A (AA: (299-447)) recombinant protein. (Expected MW is 36.9 kDa)



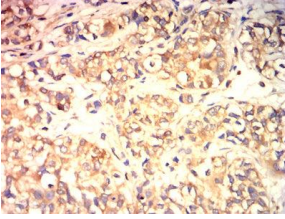
Western blot analysis using TUBA4A mouse mAb against A431 (1), HeLa (2), HepG2 (3), Jurkat (4), Cos7 (5), C6 (6), NIH3T3 (7), HEK293 (8), and HEK293-6e (9) cell lysate.



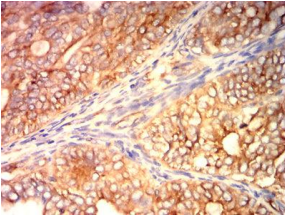
Flow cytometric analysis of A431 cells using TUBA4A mouse mAb (green) and negative control (red).



Flow cytometric analysis of HepG2 cells using TUBA4A mouse mAb (green) and negative control (red).



Immunohistochemical analysis of paraffin-embedded bladder cancer tissues using TUBA4A mouse mAb with DAB staining.



Immunohistochemical analysis of paraffin-embedded cervical cancer tissues using TUBA4A mouse mAb with DAB staining.

Storage

Store at 4°C short term. Aliquot and store at -20°C long term.

501 Changsheng S Rd, Nanhu Dist, Jiaxing, Zhejiang, China

Tel: 86 21 31007137 | E-mail: save@bt-laboratory.com | www.bt-laboratory.com