

## VIL1 Monoclonal Antibody

### Description

|                                |   |
|--------------------------------|---|
| <b>Product type</b>            | Antibody  |
| <b>Code</b>                    | BT-MCA2488  |
| <b>Host</b>                    | Mouse   |
| <b>Isotype</b>                 | Mouse IgG1  |
| <b>Size</b>                    | 100 $\mu$ L, 50 $\mu$ L   |
| <b>Immunogen</b>               | Purified recombinant fragment of human VIL1 (AA: 1-209) expressed in E. Coli. |
| <b>Mol wt</b>                  | 92.7kDa   |
| <b>Species reactivity</b>      | Human   |
| <b>Clonality</b>               | Monoclonal  |
| <b>Recommended application</b> | WB,IHC,ICC,FCM  |
| <b>Concentration</b>           | N/A   |
| <b>Full name</b>               | N/A   |
| <b>Synonyms</b>                | VIL;D2S1471   |

This product is for research use only, not for use in human, therapeutic or diagnostic procedure.

### Background

This gene encodes a member of a family of calcium-regulated actin-binding proteins. This protein represents a dominant part of the brush border cytoskeleton which functions in the capping, severing, and bundling of actin filaments. Two mRNAs of 2.7 kb and 3.5 kb have been observed; they result from utilization of alternate poly-adenylation signals present in the terminal exon.

### Recommended Dilution

WB: 1:500 - 1:2000

IHC-p: 1:200 - 1:1000

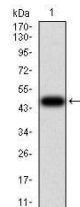
ICC: 1:200 - 1:1000

FCM: 1:200 - 1:400

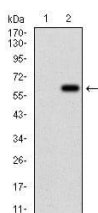
ELISA: 1:10000

Not yet tested in other applications.

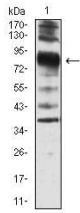
### Images



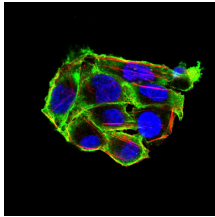
Western blot analysis using VIL1 mAb against human VIL1 (AA: 1-209) recombinant protein.  
(Expected MW is 49.4 kDa)



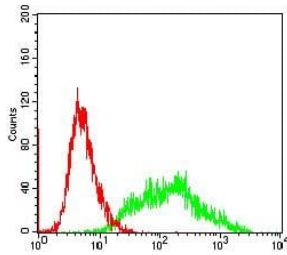
Western blot analysis using VIL1 mAb against HEK293 (1) and VIL1 (AA: 1-209)-hIgGFc transfected HEK293 (2) cell lysate.



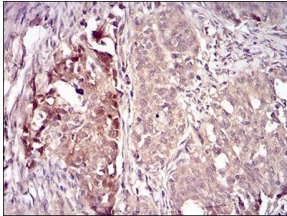
Western blot analysis using VIL1 mouse mAb against SW620 cell lysate.



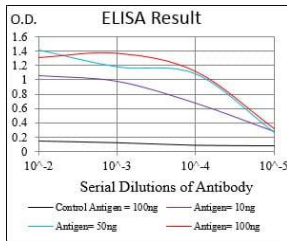
Immunofluorescence analysis of HeLa cells using VIL1 mouse mAb (green). Blue: DRAQ5 fluorescent DNA dye. Red: Actin filaments have been labeled with Alexa Fluor- 555 phalloidin. Secondary antibody from Fisher (Cat#: 35503)



Flow cytometric analysis of SW620 cells using VIL1 mouse mAb (green) and negative control (red).



Immunohistochemical analysis of paraffin-embedded cervical cancer tissues using VIL1 mouse mAb with DAB staining.



Black line: Control Antigen (100 ng); Purple line: Antigen(10ng); Blue line: Antigen (50 ng); Red line: Antigen (100 ng);

### Storage

Store at 4°C short term. Aliquot and store at -20°C long term.