

KIT Monoclonal Antibody

Description

Product type	Antibody
Code	BT-MCA2497
Host	Mouse
Isotype	Mouse IgG1
Size	100µL, 50µL
Immunogen	Purified recombinant fragment of human KIT expressed in E. Coli.
Mol wt	145kDa
Species reactivity	Human
Clonality	Monoclonal
Recommended application	WB,IHC
Concentration	N/A
Full name	N/A
Synonyms	PBT;SCFR;C-Kit;CD117

This product is for research use only, not for use in human, therapeutic or diagnostic procedure.

Background

The c-Kit proto-oncogene is a member of the receptor tyrosine kinase family and, more specifically, is closely related to the platelet derived growth factor receptor (PDGFR). c-Kit, the normal cellular homolog of the HZ4-feline sarcoma virus transforming gene (v-Kit), encodes a transmembrane receptor. c-Kit regulates a variety of biological responses including chemotaxis, cell proliferation, apoptosis and adhesion. c-Kit is also identical with the product of the W locus in mice and, as such, is integral to the development of mast cells and hematopoiesis. The ligand for the c-Kit receptor (KL) has been identified and is encoded at the murine steel (SI) locus. Kit is the human homolog of the proto-oncogene c-Kit. Mutations in Kit are integral for tumor growth and progression in various cancers.

Recommended Dilution

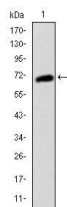
WB: 1:500 - 1:2000

IHC-p: 1:200 - 1:1000

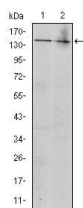
ELISA: 1:10000

Not yet tested in other applications.

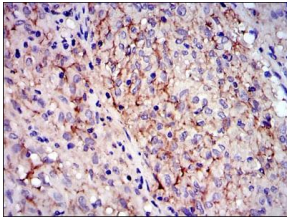
Images



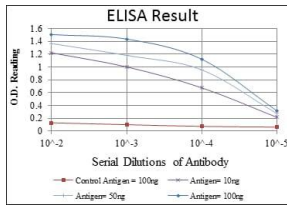
Western blot analysis using KIT mAb against human KIT (AA: 805-976) recombinant protein.
(Expected MW is 45 kDa)



Western blot analysis using KIT mouse mAb against Jurkat (1) and HeLa (2) cell lysate.



Immunohistochemical analysis of paraffin-embedded gastrointestinal stromal tumor using KIT mouse mAb with DAB staining.



Red: Control Antigen (100ng); Purple: Antigen (10ng); Green: Antigen (50ng); Blue: Antigen (100ng);

Storage

Store at 4°C short term. Aliquot and store at -20°C long term.

501 Changsheng S Rd, Nanhu Dist, Jiaxing, Zhejiang, China

Tel: 86 21 31007137 | E-mail: save@bt-laboratory.com | www.bt-laboratory.com