

BCL2 Monoclonal Antibody

Description

Product type	Antibody
Code	BT-MCA2509
Host	Mouse
Isotype	Mouse IgG1
Size	100µL, 50µL
Immunogen	Purified recombinant fragment of human BCL2 (AA: 1-239) expressed in E. Coli.
Mol wt	26.3kDa
Species reactivity	Others
Clonality	Monoclonal
Recommended application	WB,FCM
Concentration	N/A
Full name	N/A
Synonyms	Bcl-2;PPP1R50

This product is for research use only, not for use in human, therapeutic or diagnostic procedure.

Background

This gene encodes an integral outer mitochondrial membrane protein that blocks the apoptotic death of some cells such as lymphocytes. Constitutive expression of BCL2, such as in the case of translocation of BCL2 to Ig heavy chain locus, is thought to be the cause of follicular lymphoma. Alternative splicing results in multiple transcript variants.

Recommended Dilution

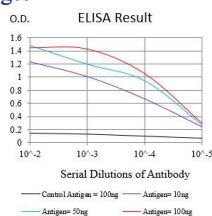
WB: 1:500 - 1:2000

FCM: 1:200 - 1:400

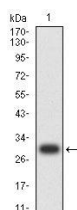
ELISA: 1:10000

Not yet tested in other applications.

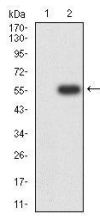
Images



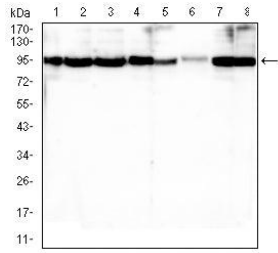
Black line: Control Antigen (100 ng);Purple line: Antigen (10ng); Blue line: Antigen (50 ng); Red line:Antigen (100 ng)



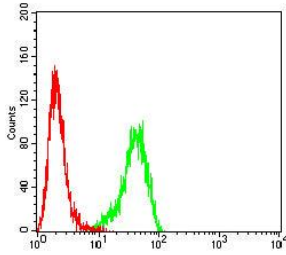
Western blot analysis using BCL2 mAb against human BCL2 (AA: 1-239) recombinant protein. (Expected MW is 29.2 kDa)



Western blot analysis using BCL2 mAb against HEK293-6e (1) and BCL2 (AA: 1-239)-hlgGFc transfected HEK293-6e (2) cell lysate.



Western blot analysis using BCL2 mouse mAb against Raji (1), MCF-7 (2), Jurkat (3), A549 (4), HEK293 (5), T47D (6), HeLa (7), and C6 (8) cell lysate.



Flow cytometric analysis of THP-1 cells using BCL2 mouse mAb (green) and negative control (red).

Storage

Store at 4°C short term. Aliquot and store at -20°C long term.

501 Changsheng S Rd, Nanhu Dist, Jiaxing, Zhejiang, China

Tel: 86 21 31007137 | E-mail: save@bt-laboratory.com | www.bt-laboratory.com