

## UQCRC1 Monoclonal Antibody

### Description

|                                |  |
|--------------------------------|--|
| <b>Product type</b>            | Antibody   |
| <b>Code</b>                    | BT-MCA2515   |
| <b>Host</b>                    | Mouse  |
| <b>Isotype</b>                 | Mouse IgG1   |
| <b>Size</b>                    | 100µL, 50µL  |
| <b>Immunogen</b>               | Purified recombinant fragment of human UQCRC1 (AA: 60-227) expressed in E. Coli. |
| <b>Mol wt</b>                  | 52.6kDa  |
| <b>Species reactivity</b>      | Others   |
| <b>Clonality</b>               | Monoclonal   |
| <b>Recommended application</b> | WB,IHC,ICC,FCM   |
| <b>Concentration</b>           | N/A  |
| <b>Full name</b>               | N/A  |
| <b>Synonyms</b>                | QCR1;UQCR1;D3S3191   |

This product is for research use only, not for use in human, therapeutic or diagnostic procedure.

### Background

UQCRC1 (Ubiquinol-Cytochrome C Reductase Core Protein 1) is a Protein Coding gene. Diseases associated with UQCRC1 include Leukodystrophy, Hypomyelinating, 4 and Alzheimer Disease. Among its related pathways are Respiratory electron transport, ATP synthesis by chemiosmotic coupling, and heat production by uncoupling proteins, and Cardiac muscle contraction. Gene Ontology (GO) annotations related to this gene include ubiquitin protein ligase binding and ubiquinol-cytochrome-c reductase activity. An important paralog of this gene is PMPCB.

### Recommended Dilution

WB: 1:500 - 1:2000

IHC-p: 1:200 - 1:1000

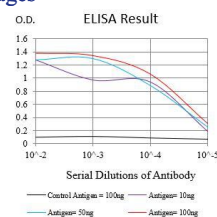
ICC: 1:50 - 1:200

FCM: 1:200 - 1:400

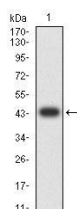
ELISA: 1:10000

Not yet tested in other applications.

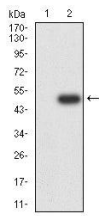
### Images



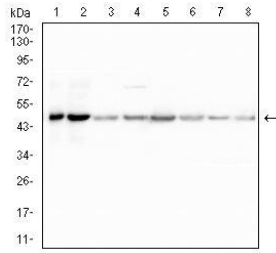
Black line: Control Antigen (100 ng);Purple line: Antigen (10ng); Blue line: Antigen (50 ng); Red line:Antigen (100 ng)



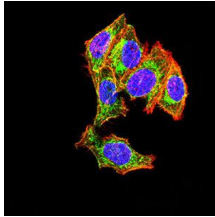
Western blot analysis using UQCRC1 mAb against human UQCRC1 (AA: 60-227) recombinant protein. (Expected MW is 44.6 kDa)



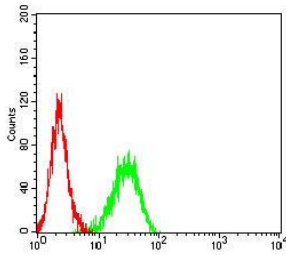
Western blot analysis using UQCRC1 mAb against HEK293-6e (1) and UQCRC1 (AA: 60-227)-hlgGfc transfected HEK293-6e (2) cell lysate.



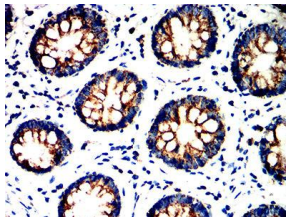
Western blot analysis using UQCRC1 mouse mAb against HeLa (1), A431 (2), HepG2 (3), Hek293 (4), PC-3 (5), SH-SY5Y (6), mouse brain (7), and rat brain (8) cell lysate.



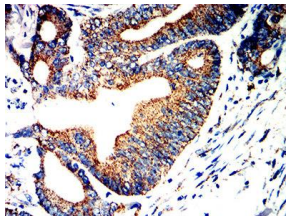
Immunofluorescence analysis of HeLa cells using UQCRC1 mouse mAb (green). Blue: DRAQ5 fluorescent DNA dye. Red: Actin filaments have been labeled with Alexa Fluor- 555 phalloidin. Secondary antibody from Fisher (Cat#: 35503)



Flow cytometric analysis of Jurkat cells using UQCRC1 mouse mAb (green) and negative control (red).



Immunohistochemical analysis of paraffin-embedded colon tissues using UQCRC1 mouse mAb with DAB staining.



Immunohistochemical analysis of paraffin-embedded colon cancer tissues using UQCRC1 mouse mAb with DAB staining.

## Storage

Store at 4°C short term. Aliquot and store at -20°C long term.

501 Changsheng S Rd, Nanhu Dist, Jiaxing, Zhejiang, China

Tel: 86 21 31007137 | E-mail: [save@bt-laboratory.com](mailto:save@bt-laboratory.com) | [www.bt-laboratory.com](http://www.bt-laboratory.com)