

ALCAM Monoclonal Antibody

Description

Product type	Antibody
Code	BT-MCA2535
Host	Mouse
Isotype	Mouse IgG2a
Size	100µL, 50µL
Immunogen	Purified recombinant fragment of human ALCAM (AA: 48-216) expressed in E. Coli.
Mol wt	65.1kDa
Species reactivity	Human
Clonality	Monoclonal
Recommended application	IHC,ICC,FCM
Concentration	N/A
Full name	N/A
Synonyms	MEMD;CD166;FLJ38514;MGC71733

This product is for research use only, not for use in human, therapeutic or diagnostic procedure.

Background

N/A

Recommended Dilution

WB: 1:500 - 1:2000

IHC-p: 1:200 - 1:1000

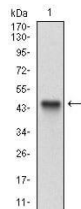
ICC: 1:200 - 1:1000

FCM: 1:200 - 1:400

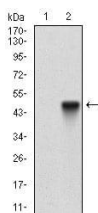
ELISA: 1:10000

Not yet tested in other applications.

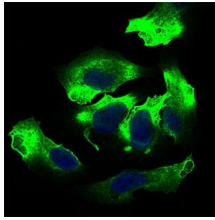
Images



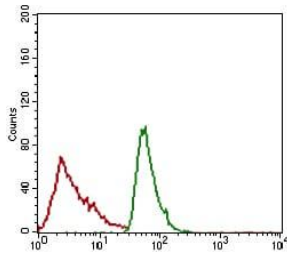
Western blot analysis using ALCAM mAb against human ALCAM recombinant protein. (Expected MW is 44.9 kDa)



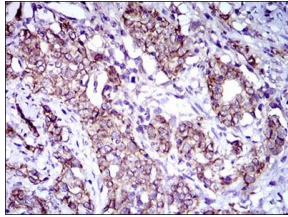
Western blot analysis using ALCAM mAb against HEK293 (1) and ALCAM (AA: 48-216)-hlgGfc transfected HEK293 (2) cell lysate.



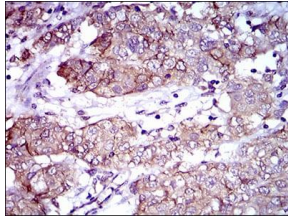
Immunofluorescence analysis of HeLa cells using ALCAM mouse mAb (green). Blue: DRAQ5 fluorescent DNA dye.



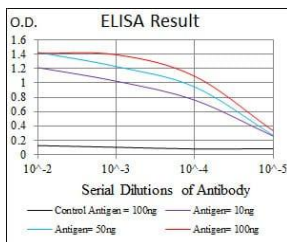
Flow cytometric analysis of JURKAT cells using ALCAM mouse mAb (green) and negative control (red).



Immunohistochemical analysis of paraffin-embedded cervical cancer tissues using ALCAM mouse mAb with DAB staining.



Immunohistochemical analysis of paraffin-embedded bladder cancer tissues using ALCAM mouse mAb with DAB staining.



Black line: Control Antigen (100 ng); Purple line: Antigen(10ng); Blue line: Antigen (50 ng); Red line: Antigen (100 ng);

Storage

Store at 4°C short term. Aliquot and store at -20°C long term.

501 Changsheng S Rd, Nanhu Dist, Jiaxing, Zhejiang, China

Tel: 86 21 31007137 | E-mail: save@bt-laboratory.com | www.bt-laboratory.com