

MAP4K1 Monoclonal Antibody

Description

Product type	Antibody
Code	BT-MCA2567
Host	Mouse
Isotype	Mouse IgG1
Size	100µL, 50µL
Immunogen	Purified recombinant fragment of human MAP4K1 (AA:278-477) expressed in mammalian.
Mol wt	91.3kDa
Species reactivity	Human,Mouse,Monkey,Rat
Clonality	Monoclonal
Recommended application	WB,IHC,FCM
Concentration	N/A
Full name	N/A
Synonyms	HPK1

This product is for research use only, not for use in human, therapeutic or diagnostic procedure.

Background

MAP4K1 (Mitogen-Activated Protein Kinase Kinase Kinase Kinase 1) is a Protein Coding gene. Among its related pathways are Angiopoietin Like Protein 8 Regulatory Pathway and B cell receptor signaling pathway (KEGG). Gene Ontology (GO) annotations related to this gene include transferase activity, transferring phosphorus-containing groups and protein tyrosine kinase activity. An important paralog of this gene is MAP4K3.

Recommended Dilution

WB: 1:500 - 1:2000

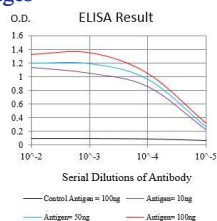
IHC-p: 1:200 - 1:1000

FCM: 1:200 - 1:400

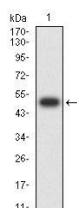
ELISA: 1:10000

Not yet tested in other applications.

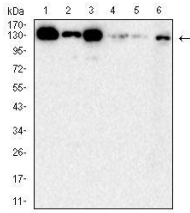
Images



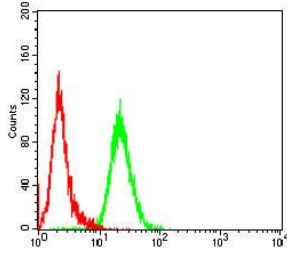
Black line: Control Antigen (100 ng);Purple line: Antigen (10ng); Blue line: Antigen (50 ng); Red line:Antigen (100 ng)



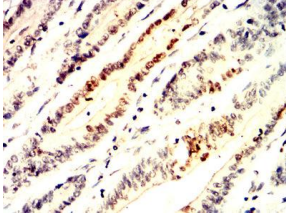
Western blot analysis using MAP4K1 mAb against human MAP4K1 (AA: 278-477) recombinant protein. (Expected MW is 52.3 kDa)



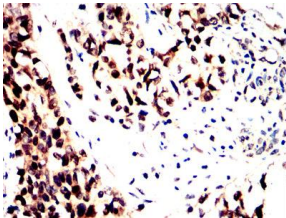
Western blot analysis using MAP4K1 mouse mAb against Jurkat (1), A549 (2), mouse kidney (3), COS7 (4), C6 (5) and NIH/3T3 (6) cell lysate.



Flow cytometric analysis of Jurkat cells using MAP4K1 mouse mAb (green) and negative control (red).



Immunohistochemical analysis of paraffin-embedded colon cancer tissues using MAP4K1 mouse mAb with DAB staining.



Immunohistochemical analysis of paraffin-embedded bladder cancer tissues using MAP4K1 mouse mAb with DAB staining.

Storage

Store at 4°C short term. Aliquot and store at -20°C long term.

501 Changsheng S Rd, Nanhu Dist, Jiaxing, Zhejiang, China

Tel: 86 21 31007137 | E-mail: save@bt-laboratory.com | www.bt-laboratory.com