

ITGA1 Monoclonal Antibody

Description

Product type	Antibody
Code	BT-MCA2569
Host	Mouse
Isotype	Mouse IgG1
Size	100µL, 50µL
Immunogen	Purified recombinant fragment of humanITGA1 (AA: extra(151-364)) expressed in E. Coli.
Mol wt	130.8kDa
Species reactivity	Others
Clonality	Monoclonal
Recommended application	IHC,FCM
Concentration	N/A
Full name	N/A
Synonyms	VLA1;CD49a

This product is for research use only, not for use in human, therapeutic or diagnostic procedure.

Background

This gene encodes the alpha 1 subunit of integrin receptors. This protein heterodimerizes with the beta 1 subunit to form a cell-surface receptor for collagen and laminin. The heterodimeric receptor is involved in cell-cell adhesion and may play a role in inflammation and fibrosis. The alpha 1 subunit contains an inserted (I) von Willebrand factor type I domain which is thought to be involved in collagen binding. [provided by RefSeq, Jul 2008]

Recommended Dilution

WB: 1:500 - 1:2000

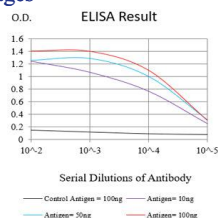
IHC-p: 1:200 - 1:1000

FCM: 1:200 - 1:400

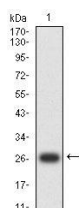
ELISA: 1:10000

Not yet tested in other applications.

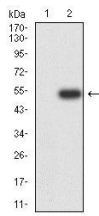
Images



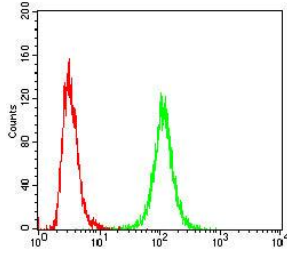
Black line: Control Antigen (100 ng);Purple line: Antigen (10ng); Blue line: Antigen (50 ng); Red line:Antigen (100 ng)



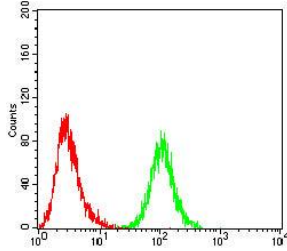
Western blot analysis using ITGA1 mAb against human ITGA1 (AA: extra(151-364)) recombinant protein. (Expected MW is 26.7 kDa)



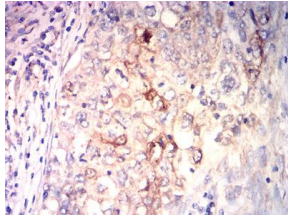
Western blot analysis using ITGA1 mAb against HEK293 (1) and ITGA1 (AA: extra(151-364))-hlgGFc transfected HEK293--6e (2) cell lysate.



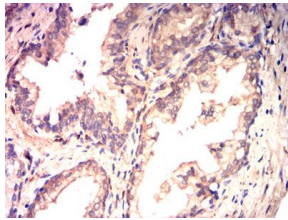
Flow cytometric analysis of HeLa cells using ITGA1 mouse mAb (green) and negative control (red).



Flow cytometric analysis of HrpG2 cells using ITGA1 mouse mAb (green) and negative control (red).



Immunohistochemical analysis of paraffin-embedded Lung cancer tissues using ITGA1 mouse mAb with DAB staining.



Immunohistochemical analysis of paraffin-embedded Prostate cancer tissues using ITGA1 mouse mAb with DAB staining.

Storage

Store at 4°C short term. Aliquot and store at -20°C long term.

501 Changsheng S Rd, Nanhu Dist, Jiaxing, Zhejiang, China

Tel: 86 21 31007137 | E-mail: save@bt-laboratory.com | www.bt-laboratory.com