

KMT5A Monoclonal Antibody

Description

Product type	Antibody
Code	BT-MCA2590
Host	Mouse
Isotype	Mouse IgG1
Size	100µL, 50µL
Immunogen	Purified recombinant fragment of human KMT5A (AA: 109-272) expressed in E. Coli.
Mol wt	42.9kDa
Species reactivity	Human
Clonality	Monoclonal
Recommended application	ICC,FCM
Concentration	N/A
Full name	N/A
Synonyms	SET8;SET07;SETD8;PR-Set7

This product is for research use only, not for use in human, therapeutic or diagnostic procedure.

Background

The protein encoded by this gene is a protein-lysine N-methyltransferase that can monomethylate Lys-20 of histone H4 to effect transcriptional repression of some genes. The encoded protein is required for cell proliferation and plays a role in chromatin condensation.

Recommended Dilution

WB: 1:500 - 1:2000

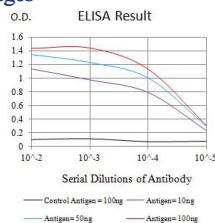
ICC: 1:200 - 1:500

FCM: 1:200 - 1:400

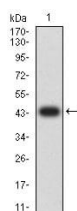
ELISA: 1:10000

Not yet tested in other applications.

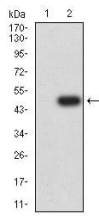
Images



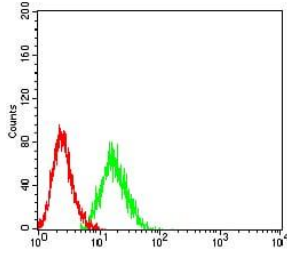
Black line: Control Antigen (100 ng);Purple line: Antigen (10ng); Blue line: Antigen (50 ng); Red line:Antigen (100 ng)



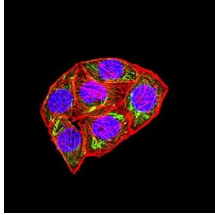
Western blot analysis using KMT5A mAb against human KMT5A (AA: 109-272) recombinant protein. (Expected MW is 44.3 kDa)



Western blot analysis using KMT5A mAb against HEK293 (1) and KMT5A (AA: 109-272)-hIgGfc transfected HEK293 (2) cell lysate.



Flow cytometric analysis of HL-60 cells using KMT5A mouse mAb (green) and negative control (red).



Immunofluorescence analysis of HeLa cells using KMT5A mouse mAb (green). Blue: DRAQ5 fluorescent DNA dye. Red: Actin filaments have been labeled with Alexa Fluor- 555 phalloidin. Secondary antibody from Fisher (Cat#: 35503)

Storage

Store at 4°C short term. Aliquot and store at -20°C long term.

501 Changsheng S Rd, Nanhu Dist, Jiaxing, Zhejiang, China

Tel: 86 21 31007137 | E-mail: save@bt-laboratory.com | www.bt-laboratory.com