

## PSMC3 Monoclonal Antibody

### Description

<b>Product type</b>	Antibody
<b>Code</b>	BT-MCA2593
<b>Host</b>	Mouse
<b>Isotype</b>	Mouse IgG1
<b>Size</b>	100µL, 50µL
<b>Immunogen</b>	Purified recombinant fragment of human PSMC3 (AA: 53-152) expressed in E. Coli.
<b>Mol wt</b>	49kDa
<b>Species reactivity</b>	Human,Monkey,Rat
<b>Clonality</b>	Monoclonal
<b>Recommended application</b>	WB,IHC,ICC,FCM
<b>Concentration</b>	N/A
<b>Full name</b>	N/A
<b>Synonyms</b>	TBP1

This product is for research use only, not for use in human, therapeutic or diagnostic procedure.

### Background

N/A

### Recommended Dilution

WB: 1:500 - 1:2000

IHC-p: 1:200 - 1:1000

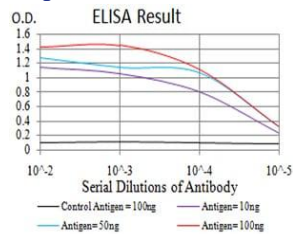
ICC: 1:200 - 1:1000

FCM: 1:200 - 1:400

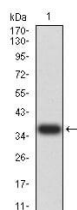
ELISA: 1:10000

Not yet tested in other applications.

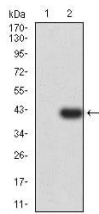
### Images



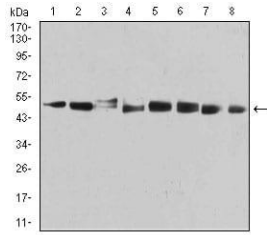
Black line: Control Antigen (100 ng);Purple line: Antigen (10ng); Blue line: Antigen (50 ng); Red line:Antigen (100 ng)



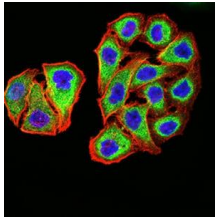
Western blot analysis using PSMC3 mAb against human PSMC3 (AA: 53-152) recombinant protein. (Expected MW is 37.2 kDa)



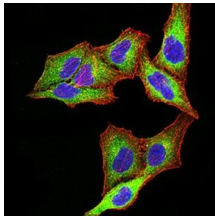
Western blot analysis using PSMC3 mAb against HEK293 (1) and PSMC3 (AA: 53-152)-hIgGFc transfected HEK293 (2) cell lysate.



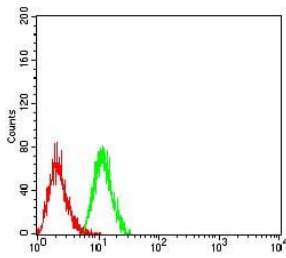
Western blot analysis using PSMC3 mouse mAb against MCF-7 (1), PC-3 (2), T47D (3), SW620 (4), COS7 (5), C6 (6), HELA (7), and A431 (8) cell lysate.



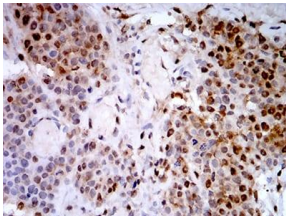
Immunofluorescence analysis of MCF-7 cells using PSMC3 mouse mAb (green). Blue: DRAQ5 fluorescent DNA dye. Red: Actin filaments have been labeled with Alexa Fluor-555 phalloidin. Secondary antibody from Fisher (Cat#: 35503)



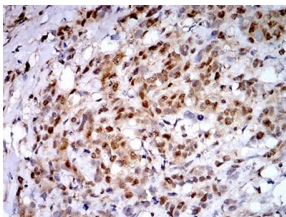
Immunofluorescence analysis of SK-OV-3 cells using PSMC3 mouse mAb (green). Blue: DRAQ5 fluorescent DNA dye. Red: Actin filaments have been labeled with Alexa Fluor-555 phalloidin. Secondary antibody from Fisher (Cat#: 35503)



Flow cytometric analysis of HeLa cells using PSMC3 mouse mAb (green) and negative control (red).



Immunohistochemical analysis of paraffin-embedded bladder cancer tissues using PSMC3 mouse mAb with DAB staining.



Immunohistochemical analysis of paraffin-embedded breast cancer tissues using PSMC3 mouse mAb with DAB staining.

## Storage

Store at 4°C short term. Aliquot and store at -20°C long term.

501 Changsheng S Rd, Nanhui Dist, Jiaxing, Zhejiang, China

Tel: 86 21 31007137 | E-mail: [save@bt-laboratory.com](mailto:save@bt-laboratory.com) | [www.bt-laboratory.com](http://www.bt-laboratory.com)