

KRT10 Monoclonal Antibody

Description

Product type	Antibody
Code	BT-MCA2594
Host	Mouse
Isotype	Mouse IgG1
Size	100µL, 50µL
Immunogen	Purified recombinant fragment of human KRT10 (AA: 345-454) expressed in E. Coli.
Mol wt	58.8kDa
Species reactivity	Human,Mouse,Monkey,Rat
Clonality	Monoclonal
Recommended application	WB,IHC,FCM
Concentration	N/A
Full name	N/A
Synonyms	BIE;EHK;K10;KPP;BCIE;CK10

This product is for research use only, not for use in human, therapeutic or diagnostic procedure.

Background

N/A

Recommended Dilution

WB: 1:500 - 1:2000

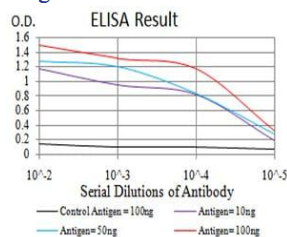
IHC-p: 1:200 - 1:1000

FCM: 1:200 - 1:400

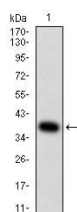
ELISA: 1:10000

Not yet tested in other applications.

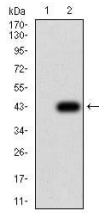
Images



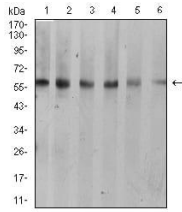
Black line: Control Antigen (100 ng);Purple line: Antigen (10ng); Blue line: Antigen (50 ng); Red line:Antigen (100 ng)



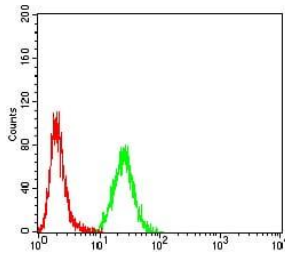
Western blot analysis using KRT10 mAb against human KRT10 (AA: 345-454) recombinant protein. (Expected MW is 38.7 kDa)



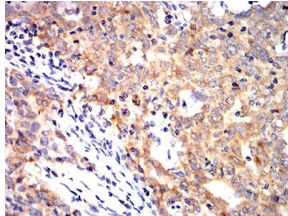
Western blot analysis using KRT10 mAb against HEK293 (1) and KRT10 (AA: 345-454)-hlgGFc transfected HEK293 (2) cell lysate.



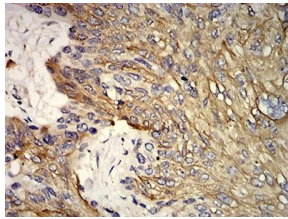
Western blot analysis using KRT10 mouse mAb against A431 (1), C6 (2), COS7 (3), Jurkat (4), NIH/3T3 (5), and HEK293 (6) cell lysate.



Flow cytometric analysis of HeLa cells using KRT10 mouse mAb (green) and negative control (red).



Immunohistochemical analysis of paraffin-embedded breast cancer tissues using KRT10 mouse mAb with DAB staining.



Immunohistochemical analysis of paraffin-embedded esophageal cancer tissues using KRT10 mouse mAb with DAB staining.

Storage

Store at 4°C short term. Aliquot and store at -20°C long term.

501 Changsheng S Rd, Nanhu Dist, Jiaxing, Zhejiang, China

Tel: 86 21 31007137 | E-mail: save@bt-laboratory.com | www.bt-laboratory.com