

MMP9 Monoclonal Antibody

Description

Product type	Antibody
Code	BT-MCA2606
Host	Mouse
Isotype	Mouse IgG2a
Size	100µL, 50µL
Immunogen	Purified recombinant fragment of human MMP9 expressed in E. Coli.
Mol wt	92kDa
Species reactivity	Human,Mouse
Clonality	Monoclonal
Recommended application	IHC,ICC,FCM
Concentration	N/A
Full name	N/A
Synonyms	GELB;CLG4B;MMP-9;MANDP2

This product is for research use only, not for use in human, therapeutic or diagnostic procedure.

Background

Proteins of the matrix metalloproteinase (MMP) family are involved in the breakdown of extracellular matrix in normal physiological processes, such as embryonic development, reproduction, and tissue remodeling, as well as in disease processes, such as arthritis and metastasis. Most MMP's are secreted as inactive proproteins which are activated when cleaved by extracellular proteinases. The enzyme encoded by this gene degrades type IV and V collagens. Studies in rhesus monkeys suggest that the enzyme is involved in IL-8-induced mobilization of hematopoietic progenitor cells from bone marrow, and murine studies suggest a role in tumor-associated tissue remodeling.

Recommended Dilution

WB: 1:500 - 1:2000

IHC-p: 1:200 - 1:1000

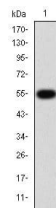
ICC: 1:200 - 1:1000

FCM: 1:200 - 1:400

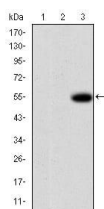
ELISA: 1:10000

Not yet tested in other applications.

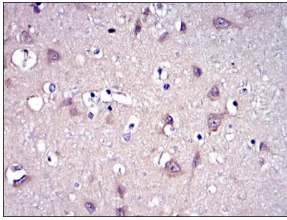
Images



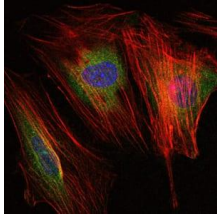
Western blot analysis using MMP9 mAb against human MMP9 (AA: 238-465) recombinant protein.
(Expected MW is 50.6 kDa)



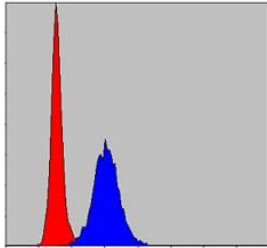
Western blot analysis using MMP9 mAb against HEK293 (1), MMP7-hlgGfc transfected HEK293 (2) cell lysate and MMP9-hlgGfc transfected HEK293 (3) cell lysate.



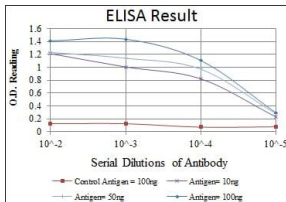
Immunohistochemical analysis of paraffin-embedded brain tissues using MMP9 mouse mAb with DAB staining.



Immunofluorescence analysis of NIH/3T3 cells using MMP9 mouse mAb (green). Blue: DRAQ5 fluorescent DNA dye. Red: Actin filaments have been labeled with Alexa Fluor-555 phalloidin.



Flow cytometric analysis of HeLa cells using MMP9 mouse mAb (blue) and negative control (red).



Red: Control Antigen (100ng); Purple: Antigen (10ng); Green: Antigen (50ng); Blue: Antigen (100ng);

Storage

Store at 4°C short term. Aliquot and store at -20°C long term.

501 Changsheng S Rd, Nanhu Dist, Jiaxing, Zhejiang, China

Tel: 86 21 31007137 | E-mail: save@bt-laboratory.com | www.bt-laboratory.com