

CLEC2 Monoclonal Antibody

Description

Product type	Antibody
Code	BT-MCA2610
Host	Mouse
Isotype	Mouse IgG2a
Size	100µL, 50µL
Immunogen	Purified recombinant fragment of human CLEC2 (AA: Extra(58-229)) expressed in E. Coli.
Mol wt	26.6kDa
Species reactivity	Others
Clonality	Monoclonal
Recommended application	IHC,FCM
Concentration	N/A
Full name	N/A
Synonyms	CLEC2;CLEC2B;PRO1384;QDED721;1810061113Rik

This product is for research use only, not for use in human, therapeutic or diagnostic procedure.

Background

Natural killer (NK) cells express multiple calcium-dependent (C-type) lectin-like receptors, such as CD94 (KLRD1; MIM 602894) and NKG2D (KLRC4; MIM 602893), that interact with major histocompatibility complex class I molecules and either inhibit or activate cytotoxicity and cytokine secretion. CLEC2 is a C-type lectin-like receptor expressed in myeloid cells and NK cells (Colonna et al., 2000 [PubMed 10671229])

Recommended Dilution

WB: 1:500 - 1:2000

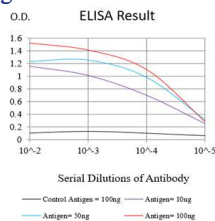
IHC-p: 1:200 - 1:1000

FCM: 1:200 - 1:400

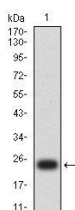
ELISA: 1:10000

Not yet tested in other applications.

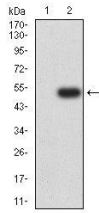
Images



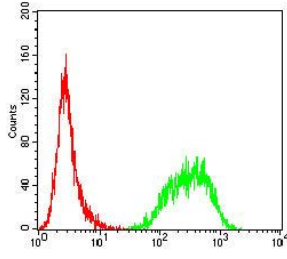
Black line: Control Antigen (100 ng);Purple line: Antigen (10ng); Blue line: Antigen (50 ng); Red line:Antigen (100 ng)



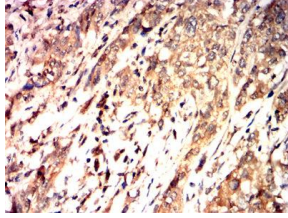
Western blot analysis using CLEC2 mAb against human CLEC2 (AA: Extra(58-229)) recombinant protein. (Expected MW is 23.3 kDa)



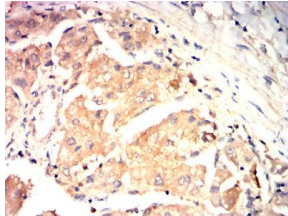
Western blot analysis using CLEC2 mAb against HEK293-6e (1) and human CLEC2 (AA: Extra(58-229))-hIgGFc transfected HEK293-6e (2) cell lysate.



Flow cytometric analysis of Jurkat cells using CLEC2 mouse mAb (green) and negative control (red).



Immunohistochemical analysis of paraffin-embedded bladder Cancer tissues using CLEC2 mouse mAb with DAB staining.



Immunohistochemical analysis of paraffin-embedded liver cancer tissues using CLEC2 mouse mAb with DAB staining.

Storage

Store at 4°C short term. Aliquot and store at -20°C long term.

501 Changsheng S Rd, Nanhu Dist, Jiaxing, Zhejiang, China

Tel: 86 21 31007137 | E-mail: save@bt-laboratory.com | www.bt-laboratory.com