

GFPT1 Monoclonal Antibody

Description

Product type	Antibody
Code	BT-MCA2615
Host	Mouse
Isotype	Mouse IgG1
Size	100µL, 50µL
Immunogen	Purified recombinant fragment of human GFPT1 (AA: 536-681) expressed in E. Coli.
Mol wt	78.8kDa
Species reactivity	Human,Monkey,Rat
Clonality	Monoclonal
Recommended application	WB,ICC,FCM
Concentration	N/A
Full name	N/A
Synonyms	GFA;GFAT;GFPT;MSLG;CMS12;GFAT1;CMSTA1;GFAT 1;GFAT1m;GFPT1L

This product is for research use only, not for use in human, therapeutic or diagnostic procedure.

Background

N/A

Recommended Dilution

WB: 1:500 - 1:2000

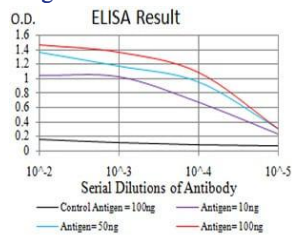
ICC: 1:200 - 1:1000

FCM: 1:200 - 1:400

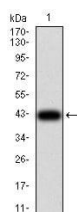
ELISA: 1:10000

Not yet tested in other applications.

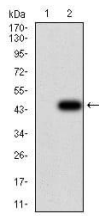
Images



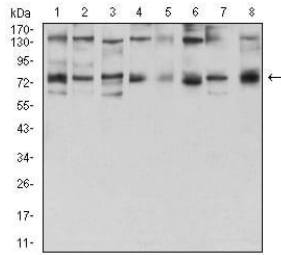
Black line: Control Antigen (100 ng);Purple line: Antigen (10ng); Blue line: Antigen (50 ng); Red line:Antigen (100 ng)



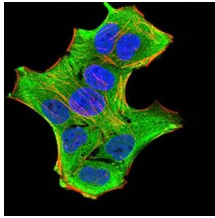
Western blot analysis using GFPT1 mAb against human GFPT1 (AA: 536-681) recombinant protein. (Expected MW is 42.3 kDa)



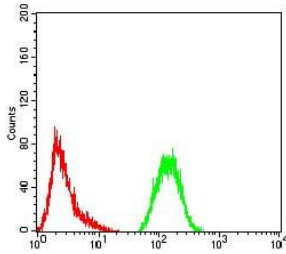
Western blot analysis using GFPT1 mAb against HEK293 (1) and GFPT1 (AA: 536-681)-hlgGFc transfected HEK293 (2) cell lysate.



Western blot analysis using GFPT1 mouse mAb against HeLa (1), HepG2 (2), HEK293 (3), BEL-7402 (4), SMMC-7721 (5), SK-MES-1 (6), C6 (7), and COS7 (8) cell lysate.



Immunofluorescence analysis of HeLa cells using GFPT1 mouse mAb (green). Blue: DRAQ5 fluorescent DNA dye. Red: Actin filaments have been labeled with Alexa Fluor- 555 phalloidin. Secondary antibody from Fisher (Cat#: 35503)



Flow cytometric analysis of HeLa cells using GFPT1 mouse mAb (green) and negative control (red).

Storage

Store at 4°C short term. Aliquot and store at -20°C long term.

501 Changsheng S Rd, Nanhu Dist, Jiaxing, Zhejiang, China

Tel: 86 21 31007137 | E-mail: save@bt-laboratory.com | www.bt-laboratory.com